







SQ 100 Comfort



page 12 | 4

SR 50



page 12 | 6

SL 100



page 12 | 8

SISTELLAR



page 12 | 9

Small Classic



page 12 | 10

Large Round Luminaire



page 12 | 11



Recommended Mounting Height: From 4m



SQ 100 Comfort with Flat Glass

features

streetlighting luminaire for universal post-top or side-entry mounting | radial faceted reflector system, flat glass enclosure, domed glass or bowl of PMMA | for HME, HST, HSE, HIT-CE/S lamping | diecast aluminium housing, surface: frame metallic grey RAL 9006, canopy aluminium grey RAL 9007

recommended mounting height: 4-8m
 spigot size: mast top mounting 60/76mm,
 side-entry mounting 42/60mm
 protection rating: IP 66
 protection class: II

benefits

- robust, long-life housing of high-grade aluminium with avantgarde design
- IP66 protection rating for lamp compartment and control gear compartment
- maintenance-friendly, opened with diecast aluminium lever catch
- individually adjustable lighting technology with highly efficient radial faceted reflector system
- high quality sealing system with air-permeable membrane film for optimal pressure equalisation
- flat glass for minimal glare and protection against vandalism
- 3° tilt with post-top mounting



1. post-top mounting with aperture
 2. SQ 100 with domed glass bowl
 3. SQ 100 with PMMA bowl

Order No.	Lamps (W)
SQ 100 Comfort with flat glass	
5NA 558 2-1CE0C236	1xHME 80/125W
5NA 558 E-1CE1C236	1xHME 125W ECO
5NA 558 E-1MT0C236	1xHIT-CE/S/HST/HSE 50/70W
5NA 558 E-1MT1C236	1xHST/HSE 70W ECO
5NA 558 E-1NT0C236	1xHIT-CE/S/HST/HSE 100W
5NA 558 E-1NT1C236	1xHST 100W ECO
5NA 558 E-1PT0C236	1xHIT-CE/S/HST/HSE 150W
SQ 100 Comfort with domed glass bowl	
5NA 558 E-1MT0C436	1xHIT-CE/S/HST/HSE 50/70W
5NA 558 E-1MT1C436	1xHST/HSE 70W ECO
5NA 558 E-1NT0C436	1xHIT-CE/S/HST/HSE 100W
5NA 558 E-1NT1C436	1xHST 100W ECO
5NA 558 E-1PT0C436	1xHIT-CE/S/HST/HSE 150W
5NA 558 E-1PT1C436	1xHST 150W ECO
5NA 558 E-1MROC436	1xHIT-CE/S/HST/HSE 50/70W
SQ 100 Comfort with bowl	
5NA 558 E-1MT0C136	1xHST/HSE 50/70W
5NA 558 E-1MT1C136	1xHST/HSE 70W ECO
5NA 558 E-1NT0C136	1xHST/HSE 100W
5NA 558 E-1NT1C136	1xHST 100W ECO
5NA 558 E-1PT0C136	1xHST/HSE 150W
5NA 558 E-1PT1C136	1xHST 150W ECO
5NA 558 E-1MROC136	1xHST/HSE 50/70W

for further lamping variations see e-Catalogue

ECO: with reducing circuit, control cable required

SQ Family in Various Sizes



The SQ family with its two construction sizes satisfies the needs of different lighting situations with a unified luminaire design. The SQ 200 ideally complements the smaller luminaire with mounting heights of 6-12m and is therefore suitable for main thoroughfares such as motorways and main roads.

luminaire dimensions:

SQ 100: L = 688mm, B = 467mm, H = 191mm,
weight: 13kg

SQ 200: L = 850mm, B = 487mm, H = 196mm,
weight: 19kg



1. view of side-entry mounting
2. inner view with gear unit
3. lever catch

accessories

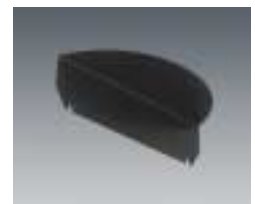
supplementary baffle for SQ 100

5NA 558 0-0XB

supplementary baffle for SQ 200

5NA 559 0-0XB

☑ for inner mounting with SQ luminaires
with PMMA diffuser



Recommended Mounting Height: From 4m



SR 50

features

streetlighting luminaire for post-top or side-entry mounting with mast flange | radial faceted reflector system, cover flat glass with frame, or bowl of PMMA | for HME, HST, HSE, TC-L lamps | glass-fibre reinforced polyester housing, supporting frame and mast flange of diecast aluminium, light grey RAL 7035 surface

recommended mounting height: 4-6m
 spigot size: mast top mounting 60/76mm,
 side-entry mounting 42/48/60mm
 protection rating: IP 65
 protection class: II

benefits

- modern streetlighting luminaire with innovative lighting technology
- economical energy consumption with compact fluorescent lamps (optional)
- tool-free removal of gear unit as complete unit with lamp socket
- central rotary catch opens lamp compartment and gear unit
- highly efficient radial faceted reflector system for high system efficiency with T and E type lamps
- post-top or side-entry mounting with mast flange with 4 different tilt angles (0°, 3°, 8°, 15°)



1. SR 100 with PMMA bowl
 2. SR 100 with 2-arm bracket



Order No.	Lamps (W)
<i>with flat glass</i>	
5NA 551 2-1AE02	1xHME 50/80W
5NA 551 E-1AE12	1xHME 80W ECO
5NA 551 2-1CE02	1xHME 80/125W
5NA 551 E-1CE12	1xHME 125W ECO
<i>with transparent PMMA bowl</i>	
5NA 551 2-1AE01	1xHME 50/80W
5NA 551 E-1AE11	1xHME 80W ECO
5NA 551 E-1MT01	1xHST/HSE 50/70W

for further lamping variations see e-Catalogue

ECO: with reducing circuit, control cable required

SR Family in Various Sizes

The SR family with its three construction sizes satisfies the needs of different lighting situations with a unified luminaire design.

The three luminaire sizes are characterised by the same functional benefits for simple operation.

luminaire dimensions:

SR 50: L = 603mm, B = 290mm, H = 197mm,
weight: 7kg

SR 100: L = 806mm, B = 358mm, H = 216mm,
weight: 13kg

SR 200: L = 870mm, B = 358mm, H = 216mm,
weight: 15kg



SR 50
mounting height 4m to 6m



SR 100
mounting height 6m to 10m



SR 200
mounting height 8m to 15m

accessories

mast flange

	for mast spigot Ø (mm)
5NA 551 0-0XM1	76
5NA 551 0-0XM2	60
5NA 551 0-0XM3	48
5NA 551 0-0XM4	42



- essential accessory for post-top and side-entry fitting
- inc. fixing screws



radial faceted reflector

Recommended Mounting Height: From 6m



mounting height (m)

SL 100 with bowl

SL 100

features

streetlighting luminaire for post-top or side-entry mounting | two reflector variations for type T or E lamps, cover transparent PMMA bowl, optionally of PC or flat glass with frame | for HME, HST, HSE lamps | glass-fibre reinforced polyester housing, supporting frame of diecast aluminium, surface: housing light grey RAL 7035, frame platinum grey RAL 7036

luminaire dimensions: L = 602mm, B = 340mm, H = 238mm, weight: 12kg
 recommended mounting height: 6-9m
 spigot sizes: mast top mounting 60/76mm, side-entry mounting 42/48/60mm
 protection rating: lamp compartment IP54, control gear compartment IP23
 protection class: II

benefits

- elegant streetlighting luminaire in quadratic form, constructed with glass-fibre reinforced polyester
- opening of the luminaire for relamping with simple lever catch
- removeable hood for electrical safety testing
- gear unit can be removed without tools
- all-round wool-felt seal with active breathing properties within frame
- light-band deflection with moveable lamp holder
- tilt angles: 0°, 15°



1. SL 100 with flat glass

Order No.	Lamps (W)
5NA 550 2-1C01	1xHME 80/125W
5NA 550 E-0S01	1xHST 50/70W
5NA 550 E-1S01	1xHST 150W
5NA 550 E-1SR1	1xHST 150W ECO

for further lamping variations see e-Catalogue

ECO: with reducing circuit, control cable required



SISTELLAR

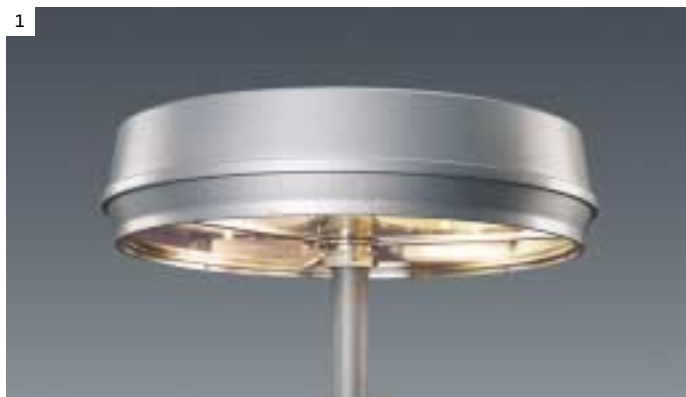
features

circular streetlighting luminaire for post-top mounting in 2 construction sizes, MAXI and MIDI | SiVARIABLE reflector system for individual light distribution, segment covers of safety glass | for HME, HSE, HST lamps | aluminium sheet housing, central supporting frame of steel, metallic grey RAL 9006 surface

luminaire dimensions:
 MAXI: dia. = 1500mm (round), H = 365mm, weight: 111kg
 MIDI: dia. = 1100mm (round), H = 324mm, weight: 50kg
 recommended mounting height: 8-16m
 spigot size: MAXI Ø108mm, MIDI Ø89mm
 protection rating: IP 44
 protection class: I or II

benefits

- central supporting frame for mast mounting
- lamp compartment with all-round wool-felt seal with active breathing properties
- electrical units clearly arranged and mounted
- extremely weather-resistant coating
- SiVARIABLE lighting technology for individually set light distribution, can be preset by the manufacturer

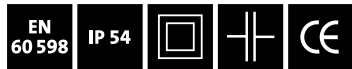


Order No.	Lamps (W)
5NA 630 2-6F	6xHME 400W
5NA 630 E-6UR	6xHSE 250W ECO
5NA 630 E-6VR	6xHST 400W ECO

for further lamping variations see e-Catalogue

1. SISTELLAR MIDI. recommended mounting height 8-12m, 4xHSE 250 W lamping

Recommended Mounting Height: From 3m



housing variation for compact fluorescent lamps (on request)

Small Classic

features

traditional streetlighting luminaire for post-top or side-entry mounting | wide distribution bowl reflector, transparent PMMA bowl as covers, optionally of PC | for HME, HSE lamps | 2-part housing of diecast aluminium, light grey RAL 7035 surface

luminaire dimensions:
 L = 535mm, B = 205mm, weight: 5kg
 recommended mounting height: 3-6m
 spigot sizes: mast top mounting 60mm,
 side-entry mounting 42mm
 protection rating: IP 54
 protection class: II

benefits

- integrated reflector bowls in forepart of luminaire for street and square lighting
- maintenance-friendly with tool-free removal of gear unit
- mounting variations with multiple, wall and corner brackets

Order No.	Lamps (W)
5NA 585 2-1A	1xHME 50/80W
5NA 585 2-1C	1xHME 80/125W
5NA 585 2-3U	1xHSE 50/70W

for further lamping variations see e-Catalogue

luminaires for 2 power ratings are wired by the manufacturer to the lower watt rating
 With 2-lamp luminaires, both lamps are separately switchable



Large Round Luminaire

features

round streetlighting luminaire for post-top or side-entry mounting | bowl reflector system, transparent PMMA bowl as cover, optionally of PC | for HME, HSE lamps | housing canopy of aluminium sheet, surface: light grey RAL 7035

recommended mounting height: 6-10m
 spigot sizes: 42/60mm, post-top mounting 76mm
 protection rating: lamp compartment IP44
 control gear compartment IP23
 protection class: II

benefits

- economical and aesthetic design, awarded the 'iF' design award
- maintenance-friendly housing assembly with lamp compartment opened with spring catches (tool-free)
- bowl reflector and lamp socket on pivotable reflector unit for varying the narrow beam illumination without changing the luminaire angle
- tilt 10°



Order No.

Lamps (W)

for HME lamps	
5NA 343 2-1ED0	1 x HME 250W
5NA 343 E-1ER	1 x HME 250W ECO
5NA 343 2-2CD0	2 x HME 80/125W
for HSE lamps	
5NA 343 E-1TD0	1 x HSE 150W
5NA 343 E-1TR	1 x HSE 150W ECO
5NA 343 E-1UD0	1 x HSE 250W
5NA 343 E-1UR	1 x HSE 250W ECO
5NA 343 E-0TD0	2 x HSE 50/70W

for further lamping variations see e-Catalogue

The Round Luminaire family with its two construction sizes satisfies the needs of different lighting situations with a unified luminaire design.

The Small Round Luminaire complements the Large Round Luminaire within mounting heights of 4-6m

1



1. Small Round luminaire
2. Small Round - cycle path luminaire

2

