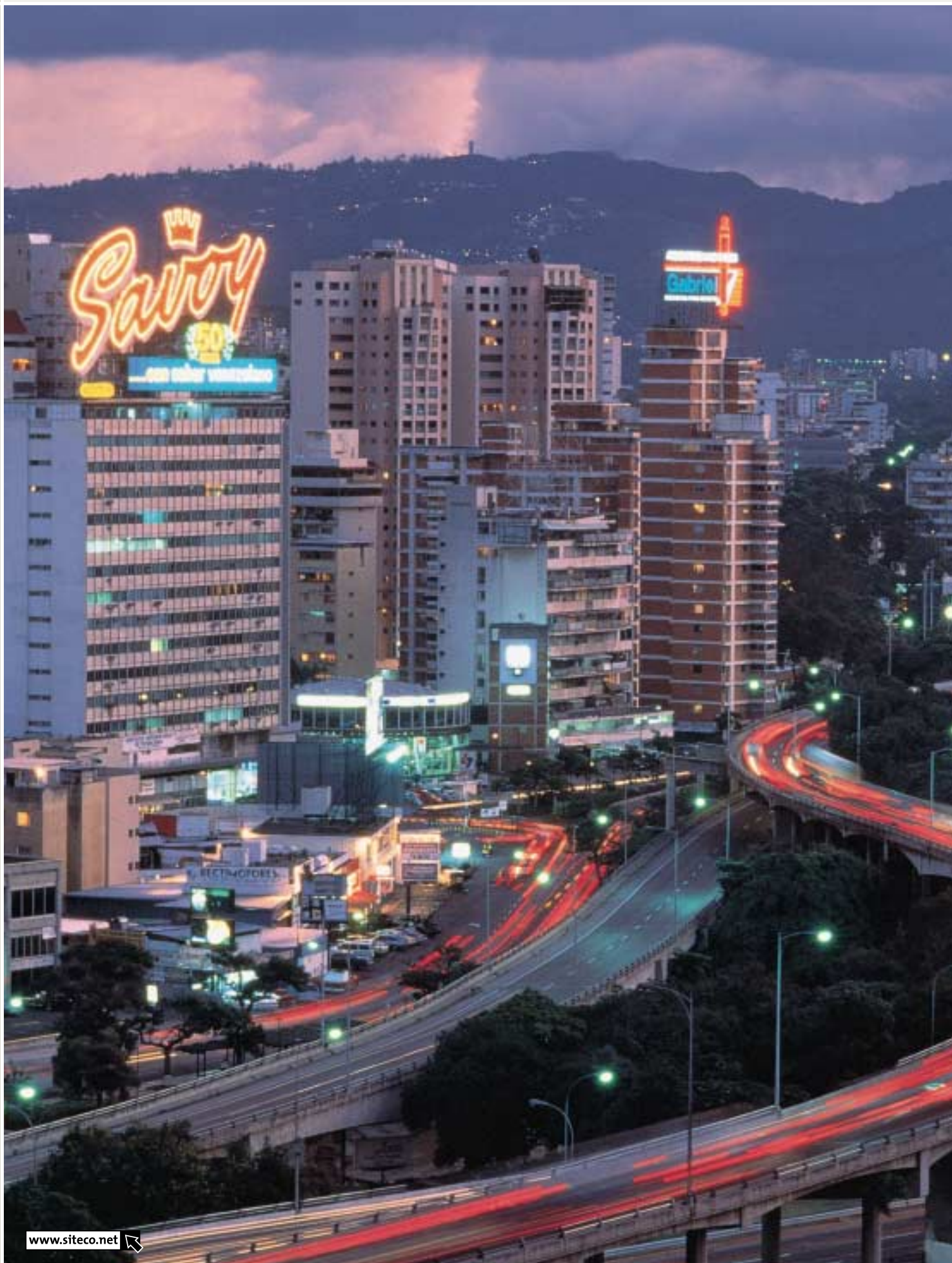


Overview: Outdoor Luminaires





10 Decorative Mast and Catenary Suspended Luminaires

11 Building Vicinity Luminaires

12 Road Lighting

13 Projectors and Floodlights









Recommended Mounting Height: From 3m

DL® 800



☞ page 10 | 4

DL® 500 MIDI



☞ page 10 | 6

SM 300



☞ page 10 | 10

SM 500



☞ page 10 | 12

SW DISC



☞ page 10 | 14

GALAXiE



☞ page 10 | 16

CITY-LIGHT



☞ page 10 | 17

Lantern



☞ page 10 | 18

Mushroom Luminaire



☞ page 10 | 20

Globe Luminaire



☞ page 10 | 21

Recommended Mounting Height: From 5m

DL® 500 MAXI



☞ page 10 | 22

Large Bell



☞ page 10 | 26

CS 27-2



☞ page 10 | 28

SiFAYETTE



☞ page 10 | 29

Old-Town Luminaires

KONUS



☞ page 10 | 30

TEKTUS MIDI



☞ page 10 | 31

TEKTUS MAXI



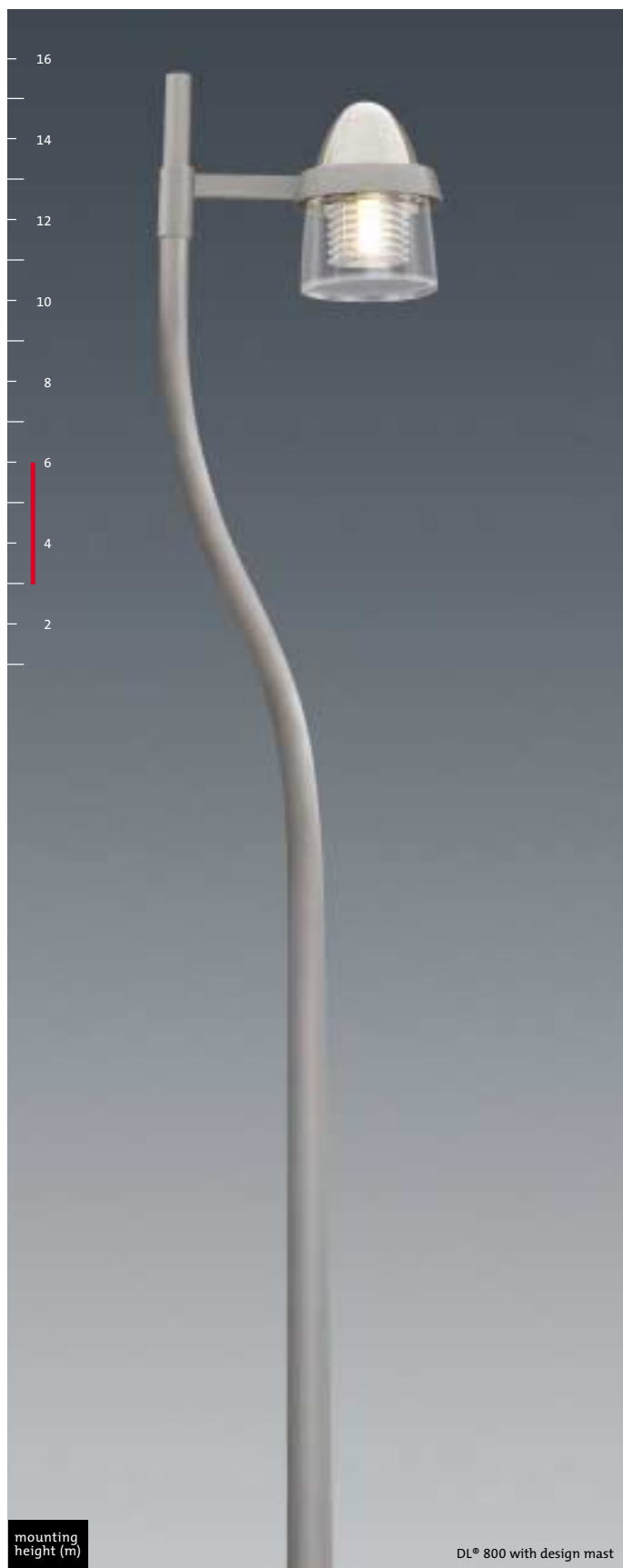
☞ page 10 | 32

Bronze Mushroom



☞ page 10 | 33

Recommended Mounting Height: From 3 m



DL® 800

features

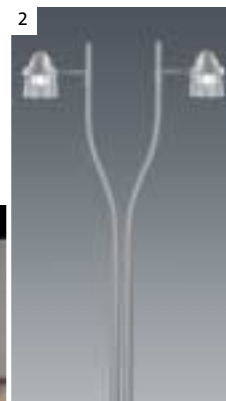
versatile mast luminaire for post-top fitting with bracket arm | pagoda reflector, fan-shaped reflector or asymmetrical reflector, transparent or frosted PMMA trough as optical enclosure | for HME, HSE, HIE, HIE-CE lamping (burst-proof), TC-L, PL-H4P | diecast aluminium mast mounting and ring | hood of transparent PMMA, stainless steel, anodised aluminium or metallic grey (DB 702S)

luminaire dimensions:
 L=761mm, B=401mm, H=560mm, weight: 14kg
 recommended mounting height: 3-6m
 spigot diameter: mast top mounting 76mm
 protection rating: IP66
 protection class: II

benefits

- DL® 800 luminaires reach upwards in a parabola form intersected horizontally by a solid ring mounting
- DL® 800 single and double design masts with unique daytime visual impact
- luminaire appearance can be adapted with hoods of stainless steel, anodised aluminium, metallic grey coated aluminium or transparent PMMA
- varying day- and night-time effect with trough of transparent or frosted PMMA
- minimal installation effort: connection and luminaire as one piece with 6m connection lead
- metal luminaire with protection rating IP66 for rough conditions

1. perfectly smooth surfaces, flawless joints, quality to be seen
2. double arrangement: harmonious luminaire and mast proportions



see accessories for appropriate masts



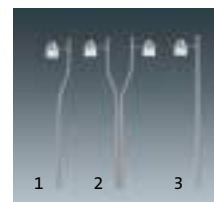
Order No.	Lamps (W)	Suitable Reflectors
aluminium anodised hood		
transparent trough (PMMA)		
5NA 152 2-1AA11A08	1xHME 50/80W	P2/P2H/A1
5NA 152 2-1CA11A08	1xHME 80/125W	P2/P2H/A1
5NA 152 E-1MA11A08	1xHSE 50/70W	P2/P2H/A1
5NA 152 E-1LA11A08	1xHIE/HIE-CE 70W	P2/P2H/A1, F1/F1H
5LA 152 7-2KG11A08	2xTC-L 18/24W	F2/F2H
5LA 152 7-1SB11A08	1x PL-H4P 60-85W	F2/F2H

- for further lamps see e-Catalogue
- for frosted trough, please substitute the bold-printed 1 with a 2
- for metallic grey coated aluminium hood, please substitute the bold-printed A with B
- for stainless steel hood, please substitute the bold-printed A with C
- for transparent hood, please substitute the bold-printed A with D

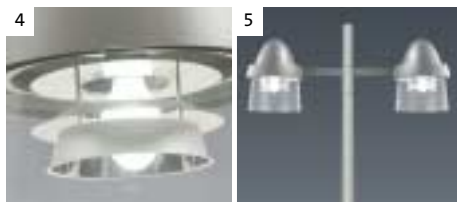
Lamps for 2G8 Socket	Wattage	
5PD 401 60W	60W	PL-H 4P (Philips)
5PD 402 85W	85W	PL-H 4P (Philips)
5PD 401 60C	60W	PL-H 4P (Philips)
5PD 402 85C	85W	PL-H 4P (Philips)

DL 800® Mast	
5NY 152 745 K1M08	design mast 1-arm (1)
5NY 152 745 K2M08	design mast 2-arm (2)
5NY 231 745 KM08	standard mast, conical (3)
5NY 231 745 AM08	standard mast, cylindrical

- delivery without shown reflector inserts
- please order reflectors separately, see accessories
- see accessories for suitable masts



1. matt frosted, non-reflective, with soft appearance
- 2.+ 3. right-angled, solid mounting ring, rugged material quality, floating luminaire head
4. rotational symmetry, maximal transparence
5. also available 2-fold for more light with straight mast (on request)



- wall connectors on request

reference	
accessories	10 34

reduction circuit available for all high pressure lamp versions

Recommended Mounting Height: From 3 m



DL® 500 MIDI

features

luminaire family with formal variations | radial faceted reflector system with optical enclosure of flat glass or as diffuser of impact-resistant PMMA | for HME, HSE/HST, TC-L lamping | glass-fibre reinforced polyester housing | diecast aluminium mast mounting and structural elements | surface: Siteco grey metallic DB 702 S*

luminaire dimensions:
 housing diameter: D=500mm (round),
 weight: 13kg
 recommended mounting height: 4-6m
 spigot sizes: mast top mounting 76mm,
 side-entry mounting 60mm
 protection rating: IP 65
 protection class: II

benefits

- 'MAXI' design for luminaire mounting height from 5m upwards
- minimal light spill (variation with flat glass)
- extremely installation and maintenance-friendly with toolless operation
- highly efficient radial faceted reflector system for large luminaire spacing with uniform illuminance
- adaptable light distribution for different applications
- extremely weather-resistant coating
- variations with multiple arrangements (2-fold, 3-fold) for increased lighting requirements

mounting height (m)

DL® 500 MIDI-M



1. high-quality aluminium hinge with all luminaire variations
2. + 3. form follows function:
the diffuser for improved light control creates a new formal appearance
4. DL500 MIDI-A: separate reducer available for 42mm spigot size



DL° 500 MIDI-T

Order No.	Lamps (W)
DL° 500 MIDI-M post-top luminaire	
flat glass (toughened safety glass)	
5NA 247 2-1AE0MS08	1xHME 50/80W
5NA 247 2-1CE0MS08	1xHME 80/125W
5NA 247 E-1MT0MS08	1xHST/HSE 50/70W
5LA 247 7-2KA0MS08	2xTC-L 18W EVG
transparent diffuser (PMMA)	
5NA 247 2-1AE0MW08	1xHME 50/80W
5NA 247 2-1CE0MW08	1xHME 80/125W
5NA 247 E-1MT0MW08	1xHST/HSE 50/70W
5LA 247 7-2KA0MW08	2xTC-L 18W EVG
DL° 500 MIDI-T post-top luminaire with supporting structure	
flat glass (toughened safety glass)	
5NA 247 2-1AE0TS08	1xHME 50/80W
5NA 247 2-1CE0TS08	1xHME 80/125W
5NA 247 E-1MT0TS08	1xHST/HSE 50/70W
5LA 247 7-2KA0TS08	2xTC-L 18W EVG
transparent diffuser (PMMA)	
5NA 247 2-1AE0TW08	1xHME 50/80W
5NA 247 2-1CE0TW08	1xHME 80/125W
5NA 247 E-1MT0TW08	1xHST/HSE 50/70W
5LA 247 7-2KA0TW08	2xTC-L 18W EVG
DL° 500 MIDI-A side-entry luminaire	
flat glass (toughened safety glass)	
5NA 247 2-1AE0AS08	1xHME 50/80W
5NA 247 2-1CE0AS08	1xHME 80/125W
5NA 247 E-1MT0AS08	1xHST/HSE 50/70W
5LA 247 7-2KA0AS08	2xTC-L 18W EVG
transparent diffuser (PMMA)	
5NA 247 2-1AE0AW08	1xHME 50/80W
5NA 247 2-1CE0AW08	1xHME 80/125W
5NA 247 E-1MT0AW08	1xHST/HSE 50/70W
5LA 247 7-2KA0AW08	2xTC-L 18W EVG

see e-Catalogue for further lampings and suitable masts



1. + 2. all post-top luminaires in 2-fold and 3-fold mounting
 3. radial faceted reflector system for economical lighting solutions
 4. toolless opening and downwards hinging of electrical unit



accessories

60/42 reducer for DL° 500 MIDI/MAXI-A
 5NA 246 0-0XM4 spigot size 60/42 mm

* further RAL- und DB colours on request
 reduction circuit available for all high pressure lamp versions

Recommended Mounting Height: From 3 m



DL® 500 MIDI

features

luminaire family with formal variations | radial faceted reflector system with optical enclosure of flat glass or as diffuser of impact-resistant PMMA | for HME, HSE/HST, TC-L lamping | glass-fibre reinforced polyester housing | surface: Siteco grey metallic DB 702 S* | mounting with individual connection accessories

luminaire dimensions:
 housing diameter: D=500mm (round)
 weight: 10kg
 recommended mounting height: 4-6m
 protection rating: IP 65
 protection class: II

benefits

- 'MAXI' design for luminaire mounting height from 5m upwards
- minimised light spill (variation with flat glass)
- extremely installation and maintenance-friendly with toolless operation
- highly efficient radial faceted reflector system for large luminaire spacing with uniform illuminance
- adaptable light distribution for various applications
- extremely weather-resistant coating

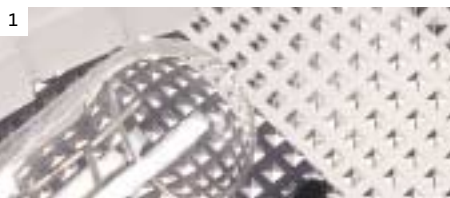


1. post-top mounting with ring form as variation (on request)
2. catenary luminaires with patented bayonet connections for quick and easy mounting



Order No.	Lamps (W)
DL° 500 MIDI-B, post-top luminaire, adjustable with bracket (accessory)	
flat glass (toughened safety glass)	
5NA 247 2-1AE0BS08	1xHME 50/80W
5NA 247 2-1CE0BS08	1xHME 80/125W
5NA 247 E-1MT0BS08	1xHST/HSE 50/70W
transparent diffuser (PMMA)	
5NA 247 2-1AE0BW08	1xHME 50/80W
5NA 247 2-1CE0BW08	1xHME 80/125W
5NA 247 E-1MT0BW08	1xHST/HSE 50/70W
DL° 500 MIDI-H, suspended luminaire, to be mounted on curved mast extension (accessory). Flat glass (toughened safety glass)	
5NA 247 2-1AE0HS08	1xHME 50/80W
5NA 247 2-1CE0HS08	1xHME 80/125W
5NA 247 E-1MT0HS08	1xHST/HSE 50/70W
5LA 247 7-2KA0HS08	2xTC-L 18W EVG
transparent diffuser (PMMA)	
5NA 247 2-1AE0HW08	1xHME 50/80W
5NA 247 2-1CE0HW08	1xHME 80/125W
5NA 247 E-1MT1HW08	1xHST/HSE 50/70W
5LA 247 7-2KA0HW08	2xTC-L 18W EVG
DL° 500 MIDI-S, to be mounted on wire hanger (accessory)	
flat glass (toughened safety glass)	
5NA 247 2-1AE0SS08	1xHME 50/80W
5NA 247 2-1CE0SS08	1xHME 80/125W
5NA 247 E-1MT0SS08	1xHST/HSE 50/70W
transparent diffuser (PMMA)	
5NA 247 2-1AE0SW08	1xHME 50/80W
5NA 247 2-1CE0SW08	1xHME 80/125W
5NA 247 E-1MT0SW08	1xHST/HSE 50/70W

see e-Catalogue for further lampings and masts



connection elements	
5NA 181 0-0XA08	wire hanger (1 swivel axis)
5NY 247 1-1XF08	curved mast extension (R=400mm, spigot ø 76mm)
5NY 247 0-2XM08	bracket (spigot 60mm)
5NY 247 0-4XM08	bracket (spigot 42mm)

see e-Catalogue for suitable masts



1. pyramidal structure in reflector area: an essential feature of the radially faceted reflector system for attaining a uniform illuminance
2. catenary suspended luminaire: also available with plug-in coupling

* further RAL- und DB colours on request
reduction circuit available for all high pressure lamp versions

Recommended Mounting Height: From 3 m



SM 300

features

representative luminaire with post-top mounting | variations with elliptical and square canopy forms with Siteco-Mirrortec® technology | optional variation with minimised light spill < 3% | for HIT-CE lamps | diecast aluminium and steel housing | Siteco grey metallic DB 702 S surface, canopy underside metallic grey (RAL 9006) with integrated secondary reflector

luminaire dimensions:
 height: H=1200mm
 canopy: SM300-R BxL=700mm x 700mm (square)
 SM300-E BxL=700mm x 1000mm (elliptical)
 weight: 33kg
 recommended mounting height: 4-7m
 spigot size: 76mm (for SM300 system mast)
 protection rating: IP 65
 insulation class: II

benefits

- newest generation Mirrortec system luminaire with exceptionally high quality appearance
- newly developed secondary reflector technology for optimised light distribution
- glare-free illumination with Siteco Mirrortec® technology
- optional Siteco Lens Light System for < 3% light spill
- highly efficient radial faceted reflector system for economical luminaire spacing and uniform lighting
- uniform illuminance of the secondary canopy for a harmonious night-time appearance
- formally matched system mast
- toolless opening with bayonet catch for simple relamping
- extremely weather-resistant coating



1. large secondary surface for interesting day and night-time effects
2. high level of stability with torsionally rigid canopy construction and rugged carrier elements
3. variation with 20° inclined canopy for strongly asymmetrical light distribution



Order No.	Lamps (W)
SM 300-R (square secondary reflector)	
with extremely wide light distribution	
symmetrical light distribution	
5NA 318 E-1MS08	1xHIT-CE 70W
5NA 318 E-1PS08	1xHIT-CE 150W
asymmetrical light distribution	
5NA 318 E-1MA08	1xHIT-CE 70W
5NA 318 E-1PA08	1xHIT-CE 150W
extremely asymmetrical light distribution (canopy at 20°)	
5NA 318 E-1MP08	1xHIT-CE 70W
5NA 318 E-1PP08	1xHIT-CE 150W
with Siteco-Lens-Light System (light emission < 3%)	
symmetrical light distribution	
5NA 318 E-1MSL08	1xHIT-CE 70W
5NA 318 E-1PSL08	1xHIT-CE 150W
asymmetrical light distribution	
5NA 318 E-1MAL08	1xHIT-CE 70W
5NA 318 E-1PAL08	1xHIT-CE 150W
extremely asymmetrical distribution (canopy at 20°)	
5NA 318 E-1MPL08	1xHIT-CE 70W
5NA 318 E-1PPL08	1xHIT-CE 150W
SM 300-E (elliptical secondary reflector)	
with extremely wide light distribution	
symmetrical light distribution	
5NA 320 E-1MS08	1xHIT-CE 70W
5NA 320 E-1PS08	1xHIT-CE 150W
asymmetrical light distribution	
5NA 320 E-1MA08	1xHIT-CE 70W
5NA 320 E-1PA08	1xHIT-CE 150W
extremely asymmetrical light distribution (canopy at 20°)	
5NA 320 E-1MP08	1xHIT-CE 70W
5NA 320 E-1PP08	1xHIT-CE 150W
with Siteco-Lens-Light System (light emission < 3%)	
symmetrical light distribution	
5NA 320 E-1MSL08	1xHIT-CE 70W
5NA 320 E-1PSL08	1xHIT-CE 150W
asymmetrical light distribution	
5NA 320 E-1MAL08	1xHIT-CE 70W
5NA 320 E-1PAL08	1xHIT-CE 150W
extremely asymmetrical light distribution (canopy at 20°)	
5NA 320 E-1MPL08	1xHIT-CE 70W
5NA 320 E-1PPL08	1xHIT-CE 150W

System Mast SM 300

5NY 318 7-40KM08	H= 4.0m
5NY 318 7-50KM08	H= 5.0m
5NY 318 7-60KM08	H= 6.0m

see also page 10 | 37



1.-3. optimised primary reflector technology, optionally with Siteco-Lens-Light System

Recommended Mounting Height: From 3 m



SM 500

features

high quality system luminaire with Siteco Mirrortec® technology | two formal variants with two mounting heights | for HIT-CE lamps | steel construction, projector with toughened safety glass cover | surface: Siteco grey metallic DB 702 S

luminaire dimensions:
 H=1450mm
 canopy: SM500-R BxL=700mm x 900mm (rectangular)
 SM500-E BxL=700mm x 900mm (elliptical)
 weight: 45kg (luminaire body)
 mounting height: 4.5m or 6m
 protection rating: IP65
 protection class: II

benefits

- system luminaire with highest quality workmanship
- handcrafted
- glare-free illumination with Siteco Mirrortec® technology
- highly efficient radial faceted reflector system for large luminaire spacing with uniform illuminance
- optimised light distribution for illuminating squares and streets
- matching system mast
- extremely weather-resistant coating



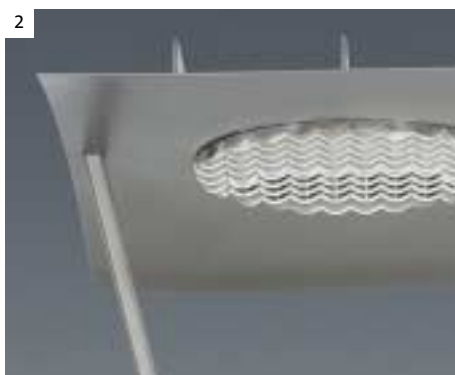
1. optimised free-form facets
 2. primary projector, performance from 70W or 150W



Order No.	Lamps (W)
SM 500-R (rectangular secondary reflector)	
mounting height 4.5m	
5NA 322 E-1MS08	1xHIT-CE 70W
5NA 322 E-1MA08	1xHIT-CE 70W
mounting height 6.0m	
5NA 322 E-1PS08	1xHIT-CE 150W
5NA 322 E-1PA08	1xHIT-CE 150W
SM 500-E (elliptical secondary reflector)	
mounting height 4.5m	
5NA 324 E-1MS08	1xHIT-CE 70W
5NA 324 E-1MA08	1xHIT-CE 70W
mounting height 6.0m	
5NA 324 E-1PS08	1xHIT-CE 150W
5NA 324 E-1PA08	1xHIT-CE 150W

S symmetrical light distribution
 A asymmetrical light distribution

mast included in delivery



1. + 2. dynamic, eye-catching design

Recommended Mounting Height: From 3 m



SW-DISC

features

luminaire family of post-top SW-DISC 3 luminaires (SW-DISC 1 and SW-DISC 2 with 5m mounting heights) | Siteco Mirrortec® technology, projector with toughened safety glass cover | for HIT-CE lamps | carrier elements and canopy of steel or aluminium | Siteco grey metallic DB 702 S surface

luminaire dimensions:
canopy diameter: D=740mm
recommended mounting height: 4-6m with SW-DISC3
spigot size: 76 mm
protection rating: IP65
protection class: II

benefits

- system luminaire with highest quality workmanship
- handcrafted
- glare-free illumination with Siteco Mirrortec® technology
- highly efficient lighting technology for large luminaire spacing with uniform illuminance
- optimised light distribution for illuminating squares and streets
- toolless opening with bayonet catch for simple relamping
- extremely weather-resistant coating



optimised free-form facets

Recommended Mounting Height: From 3 m

10|15



Order No.	Lamps (W)
SW-DISC 3	
symmetrical light distribution	
5NA 316 E-1MS08	1xHIT-CE 70W
5NA 316 E-1PS08	1xHIT-CE 150W
asymmetrical light distribution	
5NA 316 E-1MA08	1xHIT-CE 70W
5NA 316 E-1PA08	1xHIT-CE 150W
SW-DISC 2 (mounting height = 5m)	
symmetrical light distribution	
5NA 267 E-1MS0A108	1xHIT-CE 70W
5NA 267 E-1PS0A108	1xHIT-CE 150W
asymmetrical light distribution	
5NA 267 E-1MA0A108	1xHIT-CE 70W
5NA 267 E-1PA0A108	1xHIT-CE 150W
SW-DISC 1 (mounting height= 5m)	
symmetrical light distribution	
5NA 266 E-1MS0A108	1xHIT-CE 70W
5NA 266 E-1PS0A108	1xHIT-CE 150W
asymmetrical light distribution	
5NA 266 E-1MA0A108	1xHIT-CE 70W
5NA 266 E-1PA0A108	1xHIT-CE 150W

- mast for SW-DISC 1 and SW-DISC 2 included in delivery
- please order mast for SW-DISC 3 separately, see accessories



1. free-form facets available for symmetrical or asymmetrical light distribution
2. primary projector



Recommended Mounting Height: From 3 m



GALAXSiE

features

luminaire for post-top mounting with futuristic design | Siteco Mirrortec® technology | projector with toughened safety glass cover | for HIT-CE lamps | aluminium and steel mast mounting and carrying elements | canopy underside of aluminium with integrated secondary reflector, metallic grey (RAL 9006) | Siteco grey DB 702 S metallic surface*

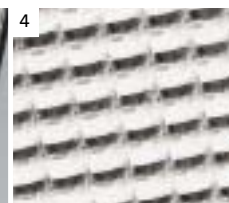
luminaire dimensions:
 canopy diameter d=800mm, weight: 16.5kg
 recommended mounting height: 4-6m
 spigot size: 76mm
 protection rating: IP65
 protection class: II

benefits

- ideal for the refurbishment of old luminaires due to compatible spigot diameter: 76mm
- glare-free illumination with Siteco Mirrortec® technology
- highly efficient lighting technology for large luminaire spacing with uniform illuminance
- optimised light distribution for illuminating squares and streets
- toolless opening with bayonet catch for simple relamping
- extremely weather-resistant coating

Order No.	Lamps (W)
<i>symmetrical light distribution</i>	
5NA 314 E-1MS08	1xHIT-CE 70W
5NA 314 E-1PS08	1xHIT-CE 150W
<i>asymmetrical light distribution</i>	
5NA 314 E-1MA08	1xHIT-CE 70W
5NA 314 E-1PA08	1xHIT-CE 150W

see accessories for suitable masts



1. toolless relamping with bayonet catches
2. metallic grey (RAL 9006) underside of canopy acts as supplementary reflector surface
3. carrying elements of V₄A steel
4. secondary reflector optimised for large area wide beam distribution



CITY-LIGHT

features

lantern-shaped mast luminaire in modern design | light distribution with reflector inserts (please order separately) | PMMA optical enclosure with transparent or frosted glass (UV-stabilised) | for HME, HSE, TC-L lamps | housing: plastic canopy, carrying elements of aluminium, self-centering mast mounting element of diecast aluminium | surface of Siteco metallic grey DB 702 S, burgundy (RAL 3005) or black (RAL 9005) | white canopy underside

luminaire dimensions:

canopy diameter $d=750\text{mm}$, weight: 14kg
recommended mounting height: 3-5m
spigot size: mast top mounting 76mm, or 60mm with reducer (as accessory)
protection rating: IP 54
protection class: II

benefits

- interesting night-time effect with upper housing aperture
- optionally with high-grade semi-transparent frosted luminaire enclosure
- especially installation-friendly with one-point mast connection
- reliable and tested gear unit technology
- modular construction enables simplified replacement of parts
- optional reflector inserts for widely differing lighting requirements
- extremely weather-resistant coating (Siteco micaceous iron ore)



1. CITY-LIGHT Plus with frosted enclosure
2. + 3. upper housing aperture for interesting night-time effect
4. one-point mast connection for quick installation

Order No.	Lamps (W)	Suitable Reflectors
City-Light Plus		
with transparent glass		
5NA 527 2-1AS18	1xHME 50/80W	B3/F5/F5H
5NA 527 2-1CS18	1xHME 80/125W	B3/F5/F5H
5NA 527 E-1MS18	1xHSE 50/70W	B3/F5/F5H
5NA 527 E-1NS18	1xHSE 100W	F5/F5H
5LA 527 7-2KS18	2xTC-L 18/24W EVG	F6/F6H
with frosted glass		
5NA 527 2-1AS58	1xHME 50/80W	B3/F5/F5H
5NA 527 2-1CS58	1xHME 80/125W	B3/F5/F5H
5NA 527 E-1MS58	1xHSE 50/70W	B3/F5/F5H
5NA 527 E-1NS58	1xHSE 100W	F5/F5H
5LA 527 7-2KS58	2xTC-L 18/24W EVG	F6/F6H
City-Light Elegance		
with transparent glass		
5NA 527 2-1AS28	1xHME 50/80W	B3/F5/F5H
5NA 527 2-1CS28	1xHME 80/125W	B3/F5/F5H
5NA 527 E-1MS28	1xHSE 50/70W	B3/F5/F5H
5NA 527 E-1NS28	1xHSE 100W	F5/F5H
5LA 527 7-2KS28	2xTC-L 18/24W EVG	F6/F6H
with frosted glass		
5NA 527 2-1AS68	1xHME 50/80W	B3/F5/F5H
5NA 527 2-1CS68	1xHME 80/125W	B3/F5/F5H
5NA 527 E-1MS68	1xHSE 50/70W	B3/F5/F5H
5NA 527 E-1NS68	1xHSE 100W	F5/F5H
5LA 527 7-2KS68	2xTC-L 18/24W EVG	F6/F6H

- delivery without shown reflector inserts
- please order reflectors separately, see accessories
- see accessories for suitable masts

reference

■ CITY-LIGHT 120 bollard	11 8
■ CITY-LIGHT 260 pillar	11 9
■ accessories reflectors	10 34

* for colours other than Siteco grey metallic, please substitute the bold-printed **8** at the end of the order no. with: **1** = black RAL 9005, **3** = burgundy RAL 3005
further RAL- und DB colours on request
reduction circuit available for all high pressure lamp versions

Recommended Mounting Height: From 3 m



Lantern

features

luminaire in contemporary design for post-top mounting | light control with reflector inserts (please order separately) | optical enclosure of transparent or stippled glass, PMMA, UV-stabilised | for HME, HSE, TC-L lamps | canopy of glass-fibre reinforced polyester, mast mounting element of diecast aluminium, surface: Siteco metallic grey DB 702 S, burgundy (RAL 3005) or black (RAL 9005), canopy underside white*

luminaire dimensions:
 canopy diameter d=750mm, weight: 17kg
 recommended mounting height: 3-5m
 spigot size: mast top mounting 76 mm, or 60mm with reducer (as accessory)
 protection rating: IP 54
 protection class: II

benefits

- situationally adapted day and night-time effects with various optical enclosures or additional steel carrier elements
- especially installation-friendly with one-point mast connection
- reliable gear unit technology
- modular construction enables simplified replacement of parts
- optional reflector inserts for differing lighting requirements
- extremely weather-resistant coating (Siteco micaceous iron ore)



underneath of canopy (white) functions as supplementary reflection surface



Order No.	Lamps (W)	Suitable Reflectors
Lantern		
<i>with transparent glass</i>		
5NA 525 2-1AS28	1xHME 50/80W	B3/F5/F5H
5NA 525 2-1CS28	1xHME 80/125W	B3/F5/F5H
5NA 525 E-1MS28	1xHSE 50/70W	B3/F5/F5H
5NA 525 E-1NS28	1xHSE 100W	F5/F5H
5LA 525 7-2KS28	2xTC-L 18/24W EVG	F6/F6H
<i>with stippled glass</i>		
5NA 525 2-1AF18	1xHME 50/80W	H1/A3
5NA 525 2-1CF18	1xHME 80/125W	H1/A3
5NA 525 E-1MF18	1xHSE 50/70W	H1/A3
5NA 525 E-1NF18	1xHSE 100W	A3
5LA 525 7-2KF18	2xTC-L 18/24W EVG	H1
Classic Lantern		
5NA 527 2-1AF48	1xHME 50/80W	H1/A3
5NA 527 2-1CF48	1xHME 80/125W	H1/A3
5NA 527 E-1MF48	1xHSE 50/70W	H1/A3
5NA 527 E-1NF48	1xHSE 100W	A3
5LA 527 7-2KF48	2xTC-L 18/24W EVG	H1
Deluxe Lantern		
5NA 527 2-1AS38	1xHME 50/80W	B3/F5/F5H
5NA 527 2-1CS38	1xHME 80/125W	B3/F5/F5H
5NA 527 E-1MS38	1xHSE 50/70W	B3/F5/F5H
5NA 527 E-1NS38	1xHSE 100W	F5/F5H
5LA 527 7-2KS38	2xTC-L 18/24W EVG	F6/F6H

- delivery without shown reflector inserts
- please order reflectors separately, see accessories
- see accessories for suitable masts
- see e-Catalogue for further lamping variations

reference

accessories 10 | 34

* for colours other than Siteco grey metallic, please substitute the bold-printed **8** at the end of the order no. with: **1** = black RAL 9005, **3** = burgundy RAL 3005
further RAL- und DB colours on request
reduction circuit available for all high pressure lamp versions

Recommended Mounting Height: From 3 m



Mushroom Luminaire

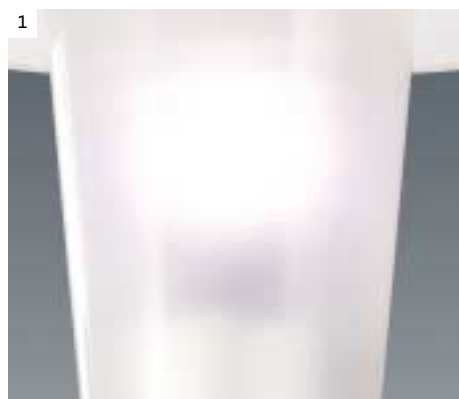
features

the classic with the post-top luminaires | light control with reflector inserts (please order separately) | optical enclosure of transparent, opal or stippled glass, PMMA, UV-stabilized | for HME, HSE, TC-L lamps | canopy of glass-fibre reinforced polyester, mast mounting element of diecast aluminium, surface: Siteco metallic grey DB 702 S, burgundy (RAL 3005) or black (RAL 9005), canopy underside white*

luminaire dimensions:
 canopy diameter d=650mm, weight: 9.5kg
 recommended mounting height: 3-5m
 spigot size: mast top mounting 76 mm, or 60mm with reducer (as accessory)
 protection rating: IP 54
 protection class: I or II

benefits

- in the course of time consistently modernised while retaining its formal independent character
- especially installation-friendly with one-point mast connection
- reliable gear unit technology
- modular construction enables simplified replacement of parts
- optional reflector inserts for widely differing lighting requirements
- situationally adapted day and night-time effects with 3 different enclosures, including high-grade semi-transparent frosted finish



1. high-grade semi-transparent frosted luminaire enclosure



2. fan-shaped reflector for circular illumination, see accessories

Order No.	Lamps (W)	Suitable Reflectors
<i>Mushroom Luminaire, insulation class II with transparent glass</i>		
5NA 523 2-1AS28	1xHME 50/80W	B3/F5/F5H
5NA 523 2-1CS28	1xHME 80/125W	B3/F5/F5H
5NA 523 E-1MS28	1xHSE 50/70W	B3/F5/F5H
5NA 523 E-1NS28	1xHSE 100W	F5/F5H
5LA 523 7-2KS28	2xTC-L 18/24W EVG	F6/F6H
<i>with frosted glass</i>		
5NA 523 2-1AS38	1xHME 50/80W	B3/F5/F5H
5NA 523 2-1CS38	1xHME 80/125W	B3/F5/F5H
5NA 523 E-1MS38	1xHSE 50/70W	B3/F5/F5H
5NA 523 E-1NS38	1xHSE 100W	F5/F5H
5LA 523 7-2KS38	2xTC-L 18/24W EVG	F6/F6H
<i>with opal glass</i>		
5NA 523 2-1AF18	1xHME 50/80W	H1
5NA 523 2-1CF18	1xHME 80/125W	H1
5NA 523 E-1MF18	1xHSE 50/70W	H1
5NA 523 E-1NF18	1xHSE 100W	H1
5LA 523 7-2KF18	2xTC-L 18/24W EVG	H1

- delivery without shown reflector inserts
- please order reflectors separately, see accessories
- see accessories for suitable masts
- see e-Catalogue for further lamping variations

* for colours other than Siteco grey metallic, please substitute the bold-printed 8 at the end of the order no. with: 3 = burgundy RAL 3005, 5 = light grey RAL 7035 further RAL- und DB colours on request
 reduction circuit available for all high pressure lamp versions

reference

☒ accessories 10 | 34



Globe

features

most luminaire in a globe form for post-top mounting | light control with reflector inserts (please order separately) | optical enclosure of transparent PC or transparent PC with half-sided coating of anthracite or opal PMMA, each with dia. D = 400mm or 500mm | for HME, HSE lamps | diecast aluminium mast mounting element, surface: Siteco metallic grey DB 702 S

recommended mounting height: 3-5m
spigot size: 76mm or 60mm
protection rating: IP 54
protection class II

benefits

- open lamp or directed light distribution according to design
- available in two sizes
- PC design with factor-10 coating for increased UV-stabilising
- most variations, wall brackets and bracket arms available as accessories



1. luminaire enclosure of PMMA, opal white, UV-stabilised
2. diecast aluminium mast mounting element
3. luminaire enclosure of impact-resistant transparent PC, UV-stabilised
4. reduced light emission, luminaire enclosure of impact-resistant transparent PC, UV-stabilised, coated on upper side

Order No.	Lamps (W)	Suitable Reflectors
Globe 400mm		
for HME lamps		
5NA 484 2-1AK1 08W	1xHME 50/80W	R1/F3
5NA 484 2-1CK1 08W	1xHME 80/125W ¹⁾	R1/F3
for HSE lamps		
5NA 484 E-1MK1 08W	1xHSE 50/70W	R1/F3
Globe 500mm		
for HME lamps		
5NA 484 2-1AK3 08W	1xHME 50/80W	R1/F3
5NA 484 2-1CK3 08W	1xHME 80/125W ¹⁾	R1/F3
for HSE lamps		
5NA 484 2-1MK3 08W	1xHSE 50/70W	R1/F3

- for colours other than Siteco grey metallic, please substitute the bold-printed **B** at the end of the order no. with: **1** = black RAL 9005
- further RAL- und DB colours on request
- for spigot size 60mm please substitute the bold-printed **W** with **R**
- For opal please substitute the bold-printed **K** with **W**
- Für one-half varnished please substitute the bold-printed **K** with **L**

accessories

prismatic refractor

5NA 484 0-0XP R1



fan-shaped refractor

5NA 480 0-0XS F3



1) 1xHME/125W only with open lamp distribution due to thermal reasons

Recommended Mounting Height: From 5 m



DL® 500 MAXI

features

luminaire family in formal variations | radial faceted reflector system with optical enclosure of flat glass (toughened safety glass) or as diffuser of impact-resistant PMMA (UV-stabilised) | for HME, HSE/HST, TC-L lamps | glass-fibre reinforced polyester housing | diecast aluminium mast mounting elements | surface: Siteco metallic grey DB 702 S*

luminaire dimensions:
 housing diameter $d=600\text{mm}$ (round)
 weight: 16kg
 recommended mounting height: 6-8m
 spigot size: mast top mounting 76 mm, side-entry mounting 60mm
 protection rating: IP65
 protection class: II

benefits

- 'MIDI' design for luminaire mounting height from 3m upwards
- minimised light spill (variation with flat glass)
- extremely installation and maintenance-friendly with toolless operation
- highly efficient radial faceted reflector system for large luminaire spacing with uniform illuminance
- adaptable light distribution for various applications
- extremely weather-resistant coating
- variations in multiple arrangements (2-fold, 3-fold) for increased light output



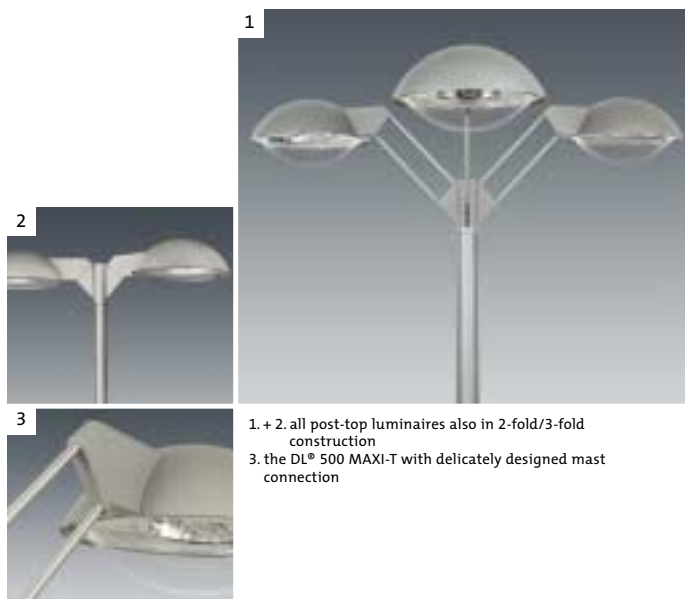
- 1+4. diffuser for improved light direction
2. high-grade aluminium hinge with all luminaire variations
3. side-entry luminaire: separate reducer available for spigot size 42mm





Order No.	Lamps (W)
DL° 500 MAXI-M, post-top luminaire	
flat glass (toughened safety glass)	
5NA 246 E-1NT0MS08	1xHST/HSE 100W
5NA 246 E-1PT0MS08	1xHST/HSE 150W
5NA 246 E-1ST0MS08	1xHST/HSE 250W
5LA 246 7-2KS0MS08	2xTC-L 18/24W
transparent diffuser (PMMA)	
5NA 246 E-1NT0MW08	1xHST/HSE 100W
5NA 246 E-1PT0MW08	1xHST/HSE 150W
5NA 246 E-1ST0MW08	1xHST/HSE 250W
5LA 246 7-2KS0MW08	2xTC-L 18/24W EVG
DL° 500 MAXI-T, post-top luminaire with supporting structure	
flat glass (toughened safety glass)	
5NA 246 E-1NT0TS08	1xHST/HSE 100W
5NA 246 E-1PT0TS08	1xHST/HSE 150W
5NA 246 E-1ST0TS08	1xHST/HSE 250W
5LA 246 7-2KS0TS08	2xTC-L 18/24W
transparent diffuser (PMMA)	
5NA 246 E-1NT0TW08	1xHST/HSE 100W
5NA 246 E-1PT0TW08	1xHST/HSE 150W
5NA 246 E-1ST0TW08	1xHST/HSE 250W
5LA 246 7-2KS0TW08	2xTC-L 18/24W EVG
DL° 500 MAXI-A, side-entry luminaire	
flat glass (toughened safety glass)	
5NA 246 E-1NT0AS08	1xHST/HSE 100W
5NA 246 E-1PT0AS08	1xHST/HSE 150W
5NA 246 E-1ST0AS08	1xHST/HSE 250W
5LA 246 7-2KS0AS08	2xTC-L 18/24W
transparent diffuser (PMMA)	
5NA 246 E-1NT0AW08	1xHST/HSE 100W
5NA 246 E-1PT0AW08	1xHST/HSE 150W
5NA 246 E-1ST0AW08	1xHST/HSE 250W
5LA 246 7-2KS0AW08	2xTC-L 18/24W EVG

see e-Catalogue for further lamping variations and suitable masts



accessories

reducer 60/42 for DL° 500 MIDI/MAXI-A
5NA 246 0-0XM4 spigot size 60/42 mm

* further RAL- und DB colours on request
reduction circuit available for all high pressure lamp versions

Recommended Mounting Height: From 5 m



DL® 500 MAXI

features

luminaire family in formal variations | radial faceted reflector system with optical enclosure of flat glass (toughened safety glass) or as diffuser of impact-resistant PMMA | for HME, HSE/HST, TC-L lamping | glass-fibre reinforced polyester housing | surface: Siteco metallic grey DB 702 5*

luminaire dimensions:
housing diameter d=600mm (round), weight: 13.5kg
mounting with individual connection accessories
recommended mounting height: 6-8m
protection rating: IP65
protection class: II

benefits

- 'MIDI' design for luminaire mounting height from 3m upwards
- minimised light spill (variation with flat glass)
- extremely installation and maintenance-friendly with toolless operation
- highly efficient radial faceted reflector system for large luminaire spacing with uniform illuminance
- adaptable light distribution for widely differing applications
- extremely weather-resistant coating



1. bracket (accessory) for DL® 500 MAXI-B, for ± 10° luminaire alignment

Recommended Mounting Height: From 5 m



Order No.	Lamps (W)
DL° 500 MAXI-B, side-entry luminaire, adjustable with bracket (accessory) flat glass (toughened safety glass)	
5NA 246 E-1NT0BS08	1xHST/HSE 100W
5NA 246 E-1PT0BS08	1xHST/HSE 150W
5NA 246 E-1ST0BS08	1xHST/HSE 250W
5LA 246 7-2KS0BS08	2xTC-L 18/24W EVG
transparent diffuser (PMMA)	
5NA 246 E-1NT0BW08	1xHST/HSE 100W
5NA 246 E-1PT0BW08	1xHST/HSE 150W
5NA 246 E-1ST0BW08	1xHST/HSE 250W
5LA 246 7-2KS0BW08	2xTC-L 18/24W EVG
DL° 500 MAXI-H, suspended luminaire, to be mounted on curved mast extension (accessory). Flat glass (toughened safety glass)	
5NA 246 E-1NT0HS08	1xHST/HSE 100W
5NA 246 E-1PT0HS08	1xHST/HSE 150W
5NA 246 E-1ST0HS08	1xHST/HSE 250W
5LA 246 7-2KS0HS08	2xTC-L 18/24W EVG
transparent diffuser (PMMA)	
5NA 246 E-1NT0HW08	1xHST/HSE 100W
5NA 246 E-1PT0HW08	1xHST/HSE 150W
5NA 246 E-1ST0HW08	1xHST/HSE 250W
5LA 246 7-2KS0HW08	2xTC-L 18/24W EVG
DL° 500 MAXI-S, to be mounted on wire hanger (accessory) flat glass (toughened safety glass)	
5NA 246 E-1NT0SS08	1xHST 100W
5NA 246 E-1PT0SS08	1xHST 150W
5NA 246 E-1ST0SS08	1xHST 250W
transparent diffuser (PMMA)	
5NA 246 E-1NT0SW08	1xHST 100W
5NA 246 E-1PT0SW08	1xHST 150W
5NA 246 E-1ST0SW08	1xHST 250W

connection elements

5NA 181 0-0XA08	wire hanger (1 axis)
5NY 246 2-1XF08	curved mast extension (R=500mm, spigot=76mm)
5NY 246 0-2XM08	bracket (spigot 60mm)
5NY 246 0-4XM08	bracket (spigot 42mm)

- see accessories for suitable masts
- see e-Catalogue for further lamping variations



1. catenary suspension with plug-in coupling
2. adjustable optics, can be adapted for different uses
3. DL 500° with curved mast extension

Recommended Mounting Height: From 5 m



Large Bell Luminaire*

features

decorative bell-shaped luminaire, large design for suspended mounting in 1- or 2-fold arrangements on a curved mast extension with bayonet catches | light control with reflector inserts (please order separately), optical enclosure of transparent glass, opal glass or frosted glass (PMMA) | for HME, HST, HSE, TC-L lamps | glass-fibre reinforced polyester housing, surface: Siteco metallic grey DB 702 S

see accessories for multiple bracket arms, curved wall brackets, reflectors and wire hangers
 protection rating: IP 54
 protection class: II

benefits

- the construction of the Bell luminaire is reminiscent of natural floral forms
- with the bayonet catch (patent pending), the Bell Luminaire can be mounted without tools on the curved mast extension
- multiple light technology, rotationally symmetrical or asymmetrical, optionally with reflector shielded on building side, for various lighting situations
- up to 4-fold mounting arrangements possible



1. anodised aluminium reflector with toolless installation
 2. technology to be seen: the radial faceted reflector system

* Bell Luminaire also in small design (mounting height from 3m upwards)

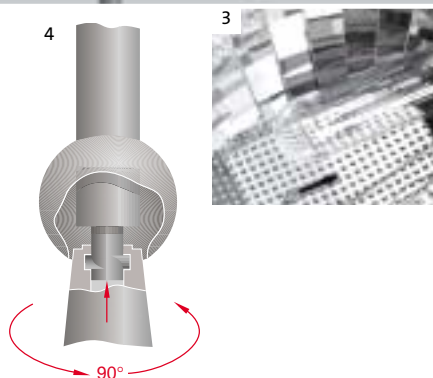


Order No.	Lamps (W)	Suitable Reflectors
large Bell Luminaire with transparent glass		
5NA 156 2-1CA108	1xHME 80/125W	P2/P2H/A1
5NA 156 E-1MA108	1xHSE 50/70W	P2/P2H/A1
5LA 156 7-2KG108	2xTC-L 18/24W	F1/F1H
large Bell Luminaire with cycle path reflector		
5NA 156 E-1MF108	1xHST 70W	inc. reflector
large Bell Luminaire with radial faceted reflector system		
5NA 156 2-1CL108	1xHME 80/125W	inc. reflector
5NA 156 E-1ML108	1xHST/HSE 50/70W	inc. reflector

small Bell Luminaire from 3m mounting height upwards

Order No.	Lamps (W)	Suitable Reflectors
small Bell Luminaire with transparent glass		
5NA 157 2-1AA108	1xHME 50/80W	P2/P2H/A1
5NA 157 E-1MA108	1xHSE 50/70W	P2/P2H/A1
small Bell Luminaire with cycle path reflector		
5NA 157 E-1 MF108	1xHST 70W	inc. reflector

- for opal glass please substitute the bold-printed **1** with a **3**
- for frosted glass please substitute the bold-printed **1** with a **2**
- for colour black instead of Siteco metallic grey DB 702 S please substitute the bold-printed **08** with a **01**
- for colour burgundy instead of Siteco metallic grey DB 702 S please substitute the bold-printed **08** with a **03**
- see e-Catalogue for further lamping variations



1. opaline white PMMA optical enclosure, UV-stabilised
2. large Bell Luminaire with transparent, structured glass
3. innovative, individually optimised radial faceted reflector system from Siteco
4. Siteco bayonet: insert – rotate – set

reference

- reflector accessories 10 | 34
- connection element accessories 10 | 36

Recommended Mounting Height: From 5 m



CS 27-2

features

robust system luminaire for post-top mounting or mounting on system mast | radial faceted reflector system, flat optical enclosure of toughened safety glass | for HIT, HST, HSE, HME, TC-TEL lamps | diecast aluminium housing, underside metallic grey RAL 9006 | surface: Siteco metallic grey DB 702 S*

luminaire dimensions:
LxBxH = 750 x 400 x 190mm, weight: 18kg
recommended mounting height: 5-8m
connection to system mast or mast mounting element (as accessory) with spigot diameter 76mm
protection rating: IP65
protection class: II

benefits

- especially robust design of high-grade aluminium for increased protection against vandalism
- luminaire and system mast combine formally for a unified appearance
- highly efficient radial faceted reflector system for large luminaire spacing with uniform illuminance
- adaptable light distribution for various applications
- minimal light spill
- extremely weather-resistant coating
- variation with 2-fold arrangement for increased light emission (multi-lane expressways, squares, roundabouts)



1. rigidly constructed plane glass cover of toughened safety glass with increased pressure resistance
2. lamp compartment accessible for qualified personnel only

Order No.	Lamps (W)
CS 27-2	
5NA 272 E-1MT0S08	1xHST/HSE 70W
5NA 272 E-1NT0S08	1xHST/HSE 100W
5NA 272 E-1PT0S08	1xHST/HSE 150W
5NA 272 E-1ST0S08	1xHST/HSE 250W
5LA 272 7-1SB0S08	1xTC-TEL 4P 60/85/120W

see e-Catalogue for further lamp variations

System Mast and Bracket Arms for CS 27-2	
mast mounting element, spigot 76mm	
5NY 272 2-0XM08	
system mast CS 27-2, cylindrical round	
5NY 272 2-5XM08	H= 5.0m, D=108mm
5NY 272 2-6XM08	H= 6.0m, D=133mm
5NY 272 2-8XM08	H= 8.0m, D=133mm

for mast with square section 100 x 100mm (5m) or 120 x 120mm (6m/8m), please substitute the bold-printed 2 with a 1

* further RAL and DB colours on request
please order brackets separately
reducing circuit for all high pressure lamping variations available



SiFAYETTE

features

modern street luminaire for post-top mounting | light directing system with large prismatic reflector (cast glass), stainless steel and domed transparent glass ring, optionally with asymmetrical reflector | for HIE, TC-T lamps | canopy and mast mounting element of diecast aluminium, stainless steel carrying elements, Siteco metallic grey DB 702 S surface

recommended mounting height: 4-6m
protection rating: IP54
protection class: II

benefits

- unusual design with genuine glass components
- harmonises well with modern architectural elements (exposed concrete, steel and glass constructions)
- matching design system masts, 1-arm or 2-arm (see accessories)



1. horizontally aligned stainless steel ring
2. with optional asymmetrical reflector, asymmetrical wide beam distribution
3. flush-fit support arms with 120° offset
4. ring of genuine hardened glass with ground edges

Order No.	Lamps (W)	Suitable Reflectors
SiFAYETTE		
5NA 442 E-1HE07	1xHIE 70W	A5
5NA 442 E-1HE10	1xHIE 100W	A5
5LA 442 7-3TE32	3xTC-T 32W	A5
5LA 442 7-3TE42	3xTC-T 42W	A5

accessories

asymmetrical reflector for HD lamps

5NA 442 0-1XS A5



reference

■ masts 10 | 36

Old-Town Luminaires



KONUS

features

classically decorative old town luminaire | lighting control with reflector inserts (please order separately) | luminaire enclosure transparent PMMA, UV-stabilised | for HME, HSE lamps | housing and bracket of natural bronze, dark gunmetal burnished

luminaire dimensions:
 housing diameter d=650mm (round)
 weight: 25kg (luminaire with bracket)
 recommended mounting height: 3.5 - 5m
 spigot size: mast top mounting 76mm
 protection rating: IP 44
 protection class: II

benefits

- available in two design variations
- handcrafted
- reliable gear unit technology
- modular construction enables simplified replacement of parts
- optional reflector inserts for widely differing lighting requirements
- formally compatible wall luminaires available



1. KONUS post-top luminaire with bracket arm



2. pagoda reflector for wide beam rotationally symmetrical light distribution



3. handcrafted bronze luminaire housing

Order No.	Lamps (W)	Suitable Reflectors
post-top luminaire with bracket arm		
5NA 265 2-1AA0A106	1xHME 50/80W	P2/P2H/A1
5NA 265 2-1CA0A106	1xHME 80/125W	P2/P2H/A1
5NA 265 E-1MA0A106	1xHSE 50/70W	P2/P2H/A1
post-top luminaire		
5NA 265 2-1AA0M106	1xHME 50/80W	P2/P2H/A1
5NA 265 2-1CA0M106	1xHME 80/125W	P2/P2H/A1
5NA 265 E-1MA0M106	1xHSE 50/70W	P2/P2H/A1

- delivery without shown reflector inserts
- please order reflectors separately, see accessories
- see accessories for masts
- wall connectors on request

reference
☒ accessories 10 34

reducing circuit for all high pressure lamping variations available



TEKTUS MIDI

features

classically decorative old town luminaire in small-sized design | open lamp distribution or with reflector insert for asymmetrical light distribution, luminaire enclosure transparent, opal or frosted PMMA, UV-stabilised | for HME, HSE lamps | bronze housing and bracket, surface: natural bronze, dark gunmetal burnished

luminaire dimensions:
 overhang: L=760mm, canopy diameter D=500mm,
 weight: 20kg
 recommended mounting height: 2.5-4m
 spigot size: compatible with TEKTUS system mast
 protection rating: IP 44
 protection class: II

benefits

- uniform appearance for different uses with two luminaire sizes of same design
- handcrafted
- modular construction enables simplified replacement of parts
- situationally adapted day and night-time effects with 3 different luminaire enclosures in impact-resistant UV-stabilised PMMA
- also available with multiple arrangement and as wall luminaire



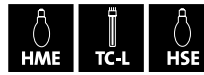
Order No.	Lamps (W)
open distribution with transparent glass	
5NA 264 2-1AF16	1xHME 50/80W
5NA 264 E-1MF16	1xHSE 50/70W
with reflector insert and transparent glass	
5NA 264 2-1AS16	1xHME 50/80W
5NA 264 E-1MS16	1xHSE 50/70W

- for opal glass please substitute the bold-printed 1 with a 3
- for transparent, structured glass please substitute the bold-printed 1 with a 2

Mast TEKTUS MIDI	
5NY 264 1-4XM16	H=4,3m

- wall connections on request

Old-Town Luminaires



TEKTUS MAXI

features

classically decorative old town luminaire in large-sized design, post-top mounting with integrated arm bracket | light control with reflector inserts (please order separately) | luminaire enclosure transparent, opal or frosted PMMA, UV-stabilised | for HME, HSE and TC-L lamps | bronze housing and bracket arm, natural bronze, dark gunmetal burnished surface

luminaire dimensions:
 overhang: L=820mm, canopy diameter D=700mm, weight: 26kg
 recommended mounting height: 3-5m
 spigot size: compatible with system mast TEKTUS
 protection rating: IP 44
 protection class: II

benefits

- uniform appearance under different deployment conditions with 2 sizes of same design
- handcrafted
- modular construction enables simplified replacement of parts
- optional reflector inserts for widely differing lighting requirements
- situationally adapted day and night-time effects with 3 different luminaire enclosures of impact-resistant UV-stabilised PMMA
- also available with multiple arrangement and as wall luminaire



pagoda reflector for wide beam rotationally symmetrical light distribution

Order No.	Lamps (W)	Suitable Reflectors
<i>with transparent glass</i>		
5NA 263 2-1AA16	1xHME 50/80W	P2/P2H
5NA 263 2-1CA16	1xHME 80/125W	P2/P2H
5NA 263 E-1MA16	1xHSE 50/70W	P2/P2H
5LA 263 7-2KA16	2xTC-L 18W	P2/P2H

- for opal glass please substitute the **1** with a **3**
- for transparent, structured glass please substitute the bold-printed **1** with a **2**
- delivery without shown reflector inserts
- please order reflectors separately, see accessories
- wall connectors on request

Mast TEKTUS MAXI	
5NY 263 1-5XM16	H=5,2m

reference

☒ reflector accessories

10 | 34

reducing circuit for all high pressure lamping variations available



Bronze Mushroom Luminaire

features

timeless luminaire for post-top mounting | light control with reflector inserts (please order separately) | optical enclosure of frosted PMMA, UV-stabilized | for HME, HSE, TC-L lamps | bronze canopy and mast mounting element, natural bronze, dark gunmetal burnished surface

luminaire dimensions:

canopy diameter $d=600\text{mm}$, weight: 10.4kg
recommended mounting height: 3.5-5m
spigot size: 76 mm
protection rating: IP65
protection class: II

benefits

- highest quality, handcrafted workmanship
- bronze components for use in maritime environments
- high IP65 protection rating reliably keeps moisture out
- high-grade semi-transparent frosted luminaire enclosure
- reflector system for wide beam uniform light distribution
- modular construction enables simplified replacement of parts

Order No.	Lamps (W)	Suitable Reflectors
5NA 261 2-1AS36	1xHME 50/80W	H1/B3/F5/F5H
5NA 261 2-1 CS36	1xHME 80/125W	H1/B3/F5/F5H
5NA 261 E-1MS36	1xHSE 50/70W	H1/B3/F5/F5H
5NA 261 E-1NS36	1xHSE 100W	H1/B3/F5/F5H
5LA 261 7-2KS36	2xTC-L 18/24W	H1/F6/F6H

- delivery without shown reflector inserts
- please order reflectors separately, see accessories

system mast, bronze-coloured

5NY 231 7-35AM87	H=3,5m
5NY 231 7-45AM87	H=4,5m

- see page 10 | 36 for more information

reference

- ☒ accessories 10 | 34

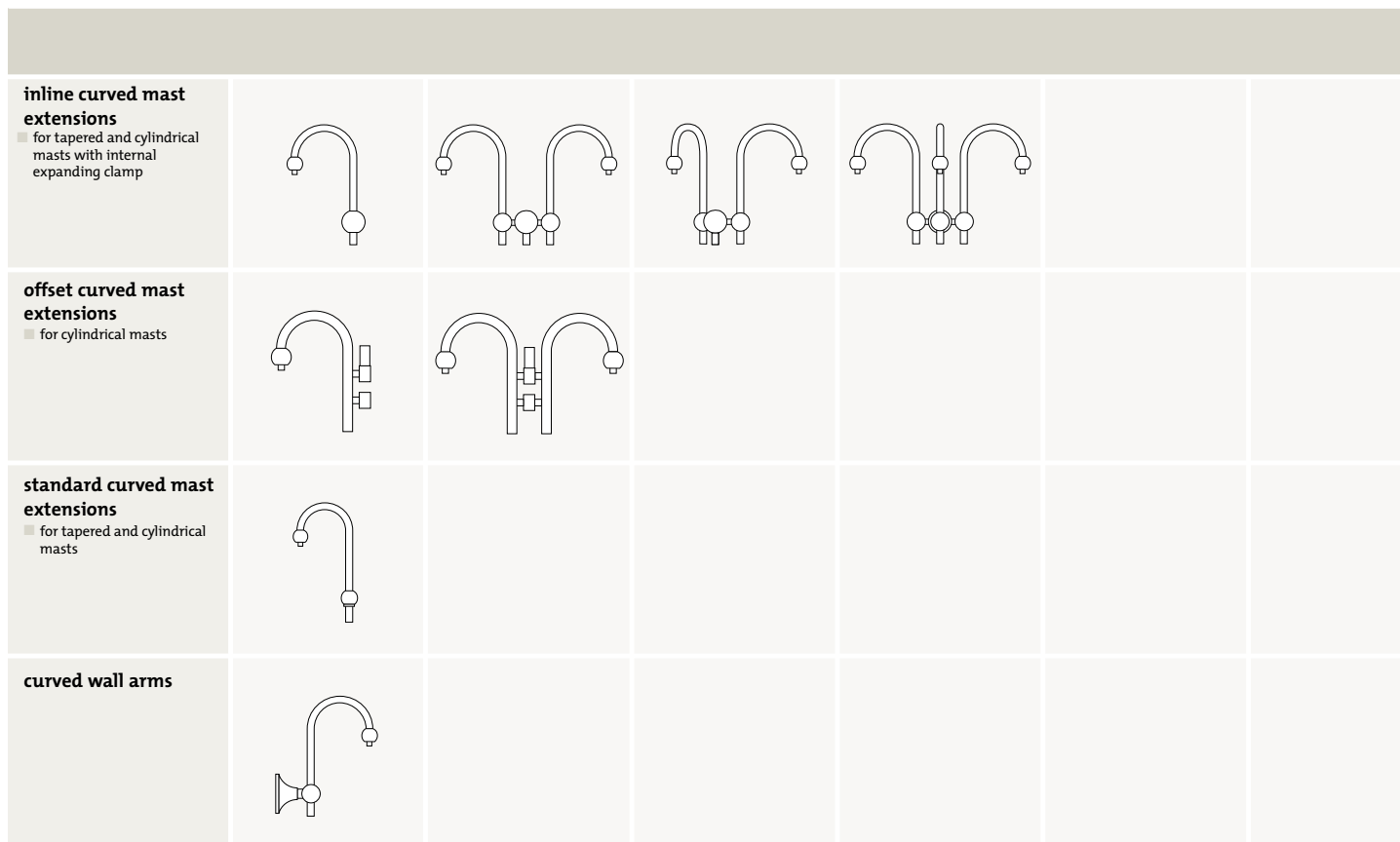
Reflectors

Luminaire	KONUS	RONDUS	Bronze Mushroom Luminaire	DL® 800
pagoda reflector P2/P2H <ul style="list-style-type: none"> for 1 x HME/HSE slightly asymmetrical illumination glare limitation class: KB 2 (partly shielded) P2H shielded on building side 	P2 5NA 140 0-0XS2 P2H 5NA 140 0-0XS21			P2 5NA 140 0-0XS2 P2H 5NA 140 0-0XS21
asymmetrical reflector A1 <ul style="list-style-type: none"> for pendant lamp position 1 x HME/HSE wide beam, asymmetrical distribution glare limitation class: KB 2 (partly shielded) 	5NA 140 0-0XS5			5NA 140 0-0XS5
fan-shaped reflector for HD lamps F5/F5H <ul style="list-style-type: none"> for 1 x HME/HSE lamps circular, zonal illumination glare limitation class: KB 2 (partly shielded) F5H shielded on building side 		F5 5NA 520 0-0XS F5H 5NA 520 0-2XS	F5 5NA 520 0-0XS F5H 5NA 520 0-2XS	
fan-shaped reflector for TC-L lamps F6/F6H <ul style="list-style-type: none"> For 1 x or 2 x TC-L lamps symmetrical distribution glare limitation class: KB 2 (partly shielded) F6H shielded on building side 		F6 5NA 520 0-5XS F6H 5NA 520 0-5XS1	F6 5NA 520 0-5XS F6H 5NA 520 0-5XS1	
building side shield H1 <ul style="list-style-type: none"> for 1 x or 2 x HME/HSE/TC-L lamps asymmetrical distribution glare limitation class: not shielded 			5NA 532 0-0XB	
fan-shaped reflector F1/F1H <ul style="list-style-type: none"> short fan-shaped reflector F1H shielded on building side 				F1 5NA 140 0-0XS3 F1H 5NA 140 0-0XS31
fan-shaped reflector F2/F2H <ul style="list-style-type: none"> long fan-shaped reflector F2H shielded on building side 				F2 5NA 140 0-0XS4 F2H 5NA 140 0-0XS41
shield B3 <ul style="list-style-type: none"> circular, zonal illumination glare limitation class: KB 2 (partly shielded) 			5NA 520 0-3XS	
reducer <ul style="list-style-type: none"> essential accessory for mounting on masts with spigot diameter 60 mm 				

	CITY-LIGHT	Lantern	Mushroom Luminaire	Bell Luminaire
				P2 5NA 140 0-0XS2 P2H 5NA 140 0-0XS21
				5NA 140 0-0XS5
	F5 5NA 520 0-0XS F5H 5NA 520 0-2XS	F5 5NA 520 0-0XS F5H 5NA 520 0-2XS	F5 5NA 520 0-0XS F5H 5NA 520 0-2XS	
	F6 5NA 520 0-5XS F6H 5NA 520 0-5XS1	F6 5NA 520 0-5XS F6H 5NA 520 0-5XS1	F6 5NA 520 0-5XS F6H 5NA 520 0-5XS1	
		5NA 532 0-0XB (with stippled glass)	5NA 532 0-0XB (with opal/frosted glass)	
				F1 5NA 140 0-0XS3 F1H 5NA 140 0-0XS31
				F2 5NA 140 0-0XS4 F2H 5NA 140 0-0XS41
	5NA 520 0-3XS	5NA 520 0-3XS (with transparent glass)	5NA 520 0-3XS (with transparent/frosted glass)	
	5LA 522 0-1XR	5LA 522 0-1XR	5LA 522 0-1XR	



Bell Luminaire Accessories



Order No.	No. of Bracket Arms	for Mast Spigot ϕ (mm)
inline curved mast extension: small Bell Luminaire		
5NY 157 1-1XX0 8	1	60
5NY 157 2-1XX0 8	1	76
5NY 157 2-2XX0 8	2	76
5NY 157 2-3XX0 8	3	76
5NY 157 2-4XX0 8	4	76
inline curved mast extension: large Bell Luminaire		
5NY 156 2-1XX0 8	1	76/89
5NY 156 2-2XX0 8	2	76/89
5NY 156 2-3XX0 8	3	76/89
5NY 156 2-4XX0 8	4	76/89
offset curved mast extension: small Bell Luminaire		
5NY 157 1-1XA0 8	1	60
5NY 157 2-1XA0 8	1	76
5NY 157 2-2XA0 8	2	76
offset curved mast extension: large Bell Luminaire		
5NY 156 2-1XA0 8	1	76
5NY 156 2-2XA0 8	2	76
standard curved mast extension: small Bell Luminaire		
5NY 157 1-1XF0 8	1	60
5NY 157 2-1XF0 8	1	76
standard curved mast extension: large Bell Luminaire		
5NY 156 2-1XF0 8	1	76
curved wall extension: small Bell Luminaire		
5NY 157 0-1XW0 8	1	
curved wall extension: large Bell Luminaire		
5NY 156 0-1XW0 8	1	

- important ordering information for colouring:
for colours other than Siteco metallic grey DB 702 S, please substitute the bold-printed number at the end of the order no. with:
0 = galvanised, uncoated
1 = black RAL 9005
3 = burgundy RAL 3005
- further RAL and DB colours on request

note: 2-arm bracket optimised for arranging luminaires at right angles to direction of travel.
(for luminaire arrangement in direction of travel: mast extension on request)

Mast for Bronze Mushroom Luminaire	Mast for SM 300	Mast for CS 27-2	SiFAYETTE System Mast
<ul style="list-style-type: none"> ■ straight steel mast for luminaire mounting in acc. with DIN EN40 ■ cylindrical offset ■ calibrated upper mast end, spigot length 100 mm, diameter = 76 mm ■ door opening 85 mm x 400 mm ■ wet-coated surface, bronze colour 	<ul style="list-style-type: none"> ■ with offset spigot ■ tapered round ■ planted section 800mm or 1000mm with H = 6.0m ■ door opening 85 mm x 400 mm ■ wet-coated with Siteco grey metallic DB 702 S 	<ul style="list-style-type: none"> ■ with integrated connector for CS 27-2 luminaires ■ cylindrical or square section ■ door opening 85mm x 400mm ■ wet-coated with Siteco grey metallic DB 702 S 	<ul style="list-style-type: none"> ■ design mast, tapered ■ mounting with flange plate ■ spigot size ϕ 60mm x 80mm

Order No.	Mast Design	H (m)
mast for Bronze Mushroom Luminaire		
5NY231735AM87	bronze	3.5
5NY231745AM87	bronze	4.5
mast for SM 300		
5NY 318 7-40KM08	spigot 76 mm	4.0
5NY 318 7-50KM08	spigot 76 mm	5.0
5NY 318 7-60KM08	spigot 76 mm	6.0
mast for CS 27-2		
5NY 272 2-5XM08	round	5.0
5NY 272 2-6XM08	round	6.0
5NY 272 2-8XM08	round	8.0
5NY 272 1-5XM08	square	5.0
5NY 272 1-6XM08	square	6.0
5NY 272 1-8XM08	square	8.0
5NY 272 2-0XM08	connector for standard mast spigot 76mm	
SiFAYETTE system mast (for single arrangement, DB701)		
5NY 442 1-4XM1 9	spigot 60 mm	4.7
SiFAYETTE system mast (for double arrangement, DB701)		
5NY 442 1-5XM2 9	spigot 60 mm	5.3