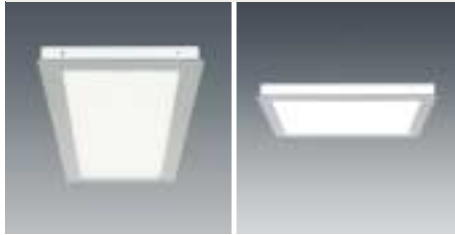








Luminaires with Eldacon®



Quadrature®  
page 3 | 4

Luminaires with Secondary Light Control



Sylta  
page 3 | 6

SiLUNA®  
page 3 | 7

Luminaires with Diffuser Optics



Siteco Louvre Luminaire XS  
page 3 | 8

Luminaires with Louvre Optics



Siteco Louvre Luminaire M  
page 3 | 10

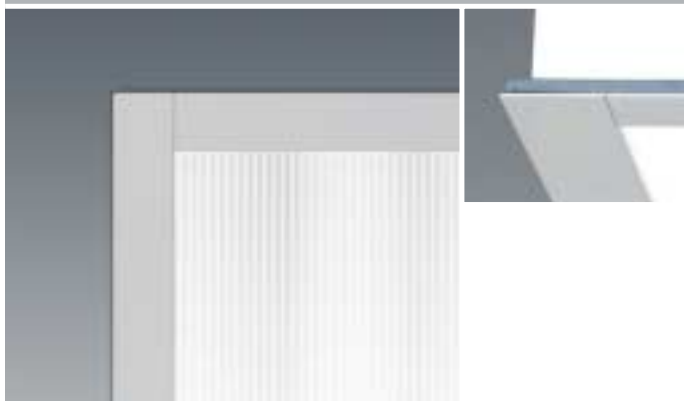
Siteco Louvre Luminaire XS  
page 3 | 11

Refurbishment Luminaires

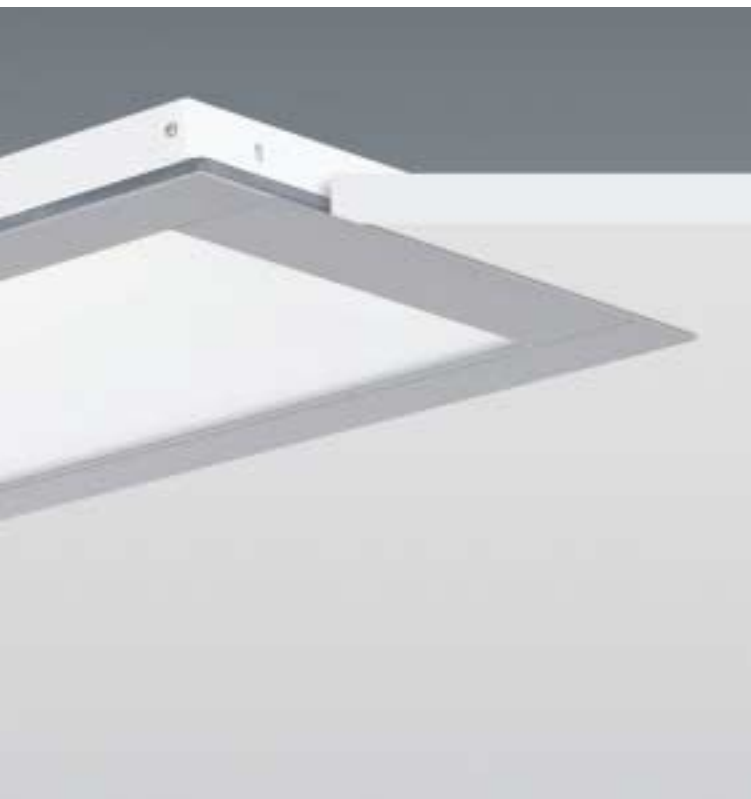


Siteco Louvre Luminaire S  
page 3 | 12





- 1. minimal installed depth of 51mm
- 2. with longitudinal designs (W=353mm), recessed depth only 42mm
- 3. discreet shadow gap
- 4. ELDACON® technology



## Quadrature® Luminaire | BAP65 with ELDACON®

### features

Quadrature® ultraflat luminaire for recessed mounting | BAP65\*\* with ELDACON® ( $L \leq 1000 \text{cd/m}^2$  for beam angle  $\geq 65^\circ$  all round) | with HFG or HF dimming as standard\* | sheet steel housing, sectional aluminium fringe, white aluminium (RAL 9006)\*

protection rating: IP23  
protection class: I  
(with lamps, light colour 840\*)

### benefits

- lowest CAT luminaire, made possible with the use of transparent ELDACON® micro-prism technology
- outstanding light quality: no direct viewing of lamps, independent of luminaire arrangement, with reduced reflected glare even directly under lamp
- technically sophisticated product with aesthetic appearance
- excellent cylindrical illuminances for a successful visual communication



Order No.	Lamps (W)	L x B x H <sup>1)</sup> (mm)	System Ceiling (ceiling module)
5LM 512 7-2MS	2xT16 14W	597 353 50	600 <sup>1)</sup>
5LM 511 7-2MS	2xT16 14W	622 353 50	625 <sup>2)</sup>
5LM 511 7-2NS	2xT16 21W	896 353 50	
5LM 512 7-2PS	2xT16 28W	1197 353 50	600 <sup>2)</sup>
5LM 511 7-2PS	2xT16 28W	1247 353 50	625 <sup>2)</sup>
5LM 512 7-2RS	2xT16 35W	1497 353 50	
5LM 511 7-7LS	2xT16 8W	353 353 50	
5LM 511 7-2TS	2xTC-L 18W	353 353 58	
5LM 512 7-2YS	2xT16 24W	597 597 58	600 <sup>3)</sup>
5LM 511 7-2YS	2xT16 24W	622 622 58	625 <sup>3)</sup>

1) housing height inc. ceiling-sided rim holes

2) The overall length of the luminaire is designed for system ceilings with module size 625mm (module 625) or with module size 600mm (module 600)

3) The overall length and width of the luminaire is designed for system ceilings with module size 625mm (module 625) or with module size 600mm (module 600).

Lay in mounting not possible (please order mounting accessories separately)

dimensions: length x breadth x height = L x B x H

### related products



Lighting systems ch. 2

Pendant luminaires ch. 2

Surface mounted luminaires ch. 2

\* The luminaires are optionally available in a dimmable version, and also as standard with fringe in a pure white colour (similar to RAL 9010) and with lamping colour 830 (see appendix for order number code)

\*\* not with design for TC-L lamping

### reference

mounting accessories 3 | 14



**Sylta Secondary Luminaire | with Secondary Light Control and BAP65 Specular Louvre**

**features** Sylta luminaire for individual mounting | with white secondary reflector and BAP65 specular louvre, highly reflective, direct and secondary distribution ( $L \leq 1000\text{cd/m}^2$  for beam angle  $\geq 65^\circ$  all round) | with HFG or HF dimming as standard\* | sheet steel housing, pure white (similar to RAL 9010)

protection rating: IP20  
protection class: I

**benefits**

- lamp channel flush-fitting with ceiling, with integrated louver technology
- luminaire complies with guidelines for DSE workplaces



Order No.	Lamps (W)	L x B x H <sup>1)</sup> (mm)	System Ceiling (ceiling module)
5MS 11B 7-1P	1xT16 28W	1248 310 94+7	625 <sup>3)</sup>
5MS 11B 7-1R	1xT16 35W	1548 310 <sup>2)</sup> 94+7	625 <sup>3)</sup>
5MS 11B 7-2P	2xT16 28W	1248 623 94+7	625 <sup>3)</sup>
5MS 11B 7-2R	2xT16 35W	1548 623 <sup>2)</sup> 94+7	625 <sup>3)</sup>
5MS 11B 7-2Y	2xT16 24W	623 623 94+7	625 <sup>3)</sup>

1) housing height + ceiling-sided rim holes  
2) the width of the luminaire is designed for panel ceilings with module size 625 mm (module 625)  
3) the length and width of the luminaire is designed for system ceilings with module size 625mm (module 625)  
dimensions: length x breadth x height = L x B x H



1. twin lamp luminaire

\* The luminaires are optionally available in a dimmable version (see appendix for order number code)

reference	
☒ mounting accessories	3   14



## SiLUNA® Luminaire | with Secondary Light Control and Decorative Direct Component

### features

SiLUNA® luminaire for individual mounting | with white secondary reflector and perforated lamp channel, secondary distribution with decorative direct component | with HFG or HF dimming as standard\* | sheet steel housing, pure white (similar to RAL 9010)

protection rating: IP20  
protection class: I

### benefits

- wide distribution with soft light
- the lamp channel impedes direct glare caused by lamps



1

1. installation in suspended ceiling
2. illuminated secondary reflector

2



Order No.	Lamps (W)	L x B x H <sup>1)</sup> (mm)	System Ceiling (ceiling module)
5LJ 681 7-1C	1xT26 36W	1248 309 123+7	625 <sup>3)</sup>
5LJ 681 7-1E	1xT26 58W	1548 309 <sup>3)</sup> 123+7	
5LJ 681 7-2C	2xT26 36W	1248 623 160+7	625 <sup>3)</sup>
5LJ 681 7-2E	2xT26 58W	1548 623 <sup>3)</sup> 160+7	
5LJ 681 7-1T	1xTC-L 18W	309 309 123+7	625 <sup>3)</sup>
5LJ 691 7-1U	1xTC-L 55W	597 597 160+7	600 <sup>3)</sup>
5LJ 681 7-1U	1xTC-L 55W	623 623 160+7	625 <sup>3)</sup>

1) housing height + ceiling-sided rim holes

2) the width of the luminaire is designed for system ceilings with module size 625 mm (module 625)

3) The overall length and width of the luminaire are designed for system ceilings with module size 625mm (module 625) or with module size 600 mm (module 600)

□ dimensions: length x breadth x height = L x B x H

### related products



□ surface mounted luminaires ch. 1

### reference

□ mounting accessories 3 | 14

\* The luminaires are optionally available in a dimmable version (see appendix for order number code)



- 1. luminaire for continuous mounting
- 2. luminaire with end cap module 600
- 3. luminaire with end cap module 625



## Siteco Luminaire XS | with Frosted Diffuser

### features

Siteco louvre luminaire XS for continuous mounting | with frosted diffuser, wide distribution | with HFG or HF dimming as standard\* | sheet steel housing, pure white (similar to RAL 9010)\* | PMMA diffuser, longitudinally with sectional aluminium, white

protection rating: IP20  
protection class: I  
(without end caps)

### benefits

- luminaire design reduced to the essential: the light itself
- for high-grade suspended ceilings and panel ceilings (module 100)
- continuous mounting with uninterrupted diffuser appearance



Order No.	Lamps (W)	L1 <sup>1)</sup> x B x H (mm)	System/Panel Ceiling ceiling module
with frosted diffuser			
5LF 41W 7-1P	1xT16 28W	1177 114 85	625 <sup>2)</sup> 600 <sup>2)</sup> 100 <sup>3)</sup>
5LF 41W 7-1J	1xT16 54W	1177 114 85	625 <sup>2)</sup> 600 <sup>2)</sup> 100 <sup>3)</sup>
5LF 41W 7-1R	1xT16 35W	1477 114 85	100 <sup>3)</sup>
5LF 41W 7-1F	1xT16 49W	1477 114 85	100 <sup>3)</sup>
5LF 41W 7-2P	2xT16 28W	1177 198 85	625 <sup>2)</sup> 600 <sup>2)</sup>
5LF 41W 7-2R	2xT16 35W	1477 198 85	
5LF 41W 7-2F	2xT16 49W	1477 198 85	

- 1) continuous luminaire without end caps, please order end cap sets separately (total length L (module 625) = L1+72mm; L (module 600) = L1+22mm).
- 2) The overall length of the luminaire is designed for system ceilings with module size 625 mm (module 625) or with module size 600 mm (module 600).
- 3) the width of the luminaire is designed for panel ceilings with module size 100mm (module 100).

□ dimensions: length x breadth x height = L x B x H

### related products



□ with louvre page 3 | 11

### reference

□ accessories 3 | 14

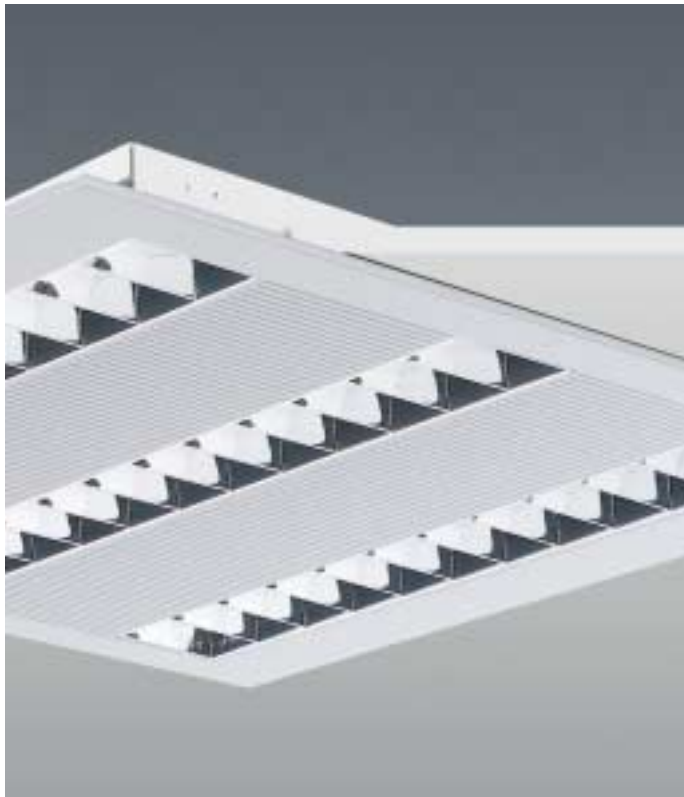
\* The luminaires are optionally available in a dimmable version and also with the colour silver (similar to RAL 9006) as standard (see appendix for order number code)

Luminaires With Louvre Appearance



MIRO™

Siteco Louvre Luminaire M for Individual Mounting | With BAP65 Specular Louvre



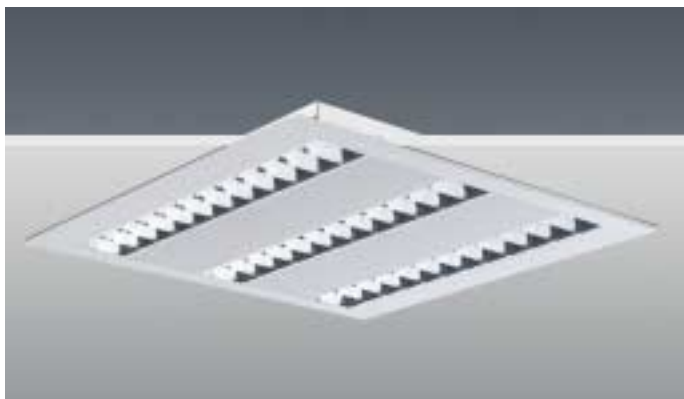
features

Siteco louvre luminaire M for individual mounting | with BAP65 specular louvre | with HFG or HF dimming as standard\* | sheet steel housing, silver (similar to RAL 9006) \*

protection rating: IP20  
protection class: I

benefits

- minimal installed depth
- one-piece underside
- luminaire also in silver and/or with structured design as standard



1. detail: luminaire with structured design between louvres

Order No.	Lamps (W)	L x B x H <sup>1)</sup> (mm)	System Ceiling (ceiling module)
<i>with BAP65 specular louvre, high-gloss, reflection heightened<sup>3)</sup></i>			
5LF 122 7-6YA0000A	2xT16 24W	597 597 51+7	600 <sup>2)</sup>
5LF 112 7-6YA0000A	2xT16 24W	622 622 51+7	625 <sup>2)</sup>
5LF 122 7-3MA0000A	3xT16 14W	597 597 51+7	600 <sup>2)</sup>
5LF 112 7-3MA0000A	3xT16 14W	622 622 51+7	625 <sup>2)</sup>
5LF 112 7-3YA0000A	3xT16 24W	622 622 51+7	625 <sup>2)</sup>
<i>with BAP65 specular louvre, matt<sup>4)</sup></i>			
5LF 124 7-6YA0000A	2xT16 24W	597 597 51+7	600 <sup>2)</sup>
5LF 114 7-6YA0000A	2xT16 24W	622 622 51+7	625 <sup>2)</sup>
5LF 124 7-3MA0000A	3xT16 14W	597 597 51+7	600 <sup>2)</sup>
5LF 114 7-3MA0000A	3xT16 14W	622 622 51+7	625 <sup>2)</sup>
5LF 114 7-3YA0000A	3xT16 24W	622 622 51+7	625 <sup>2)</sup>

1) housing height + ceiling-sided rim holes  
2) the overall length and width of the luminaire are designed for system ceilings with module size 625mm (module 625) or with module size 600mm (module 600).  
3) L ≤ 200cd/m<sup>2</sup> for beam angle ≥ 65° all round  
4) L ≤ 1000cd/m<sup>2</sup> for beam angle ≥ 65° all round  
dimensions: length x breadth x height = L x B x H

related products



linear fluorescent luminaire eCatalogue

air handling luminaire eCatalogue

reference

mounting accessories 3 | 14

\* The luminaires are optionally available in a dimmable version and also in a pure white colour (similar to RAL 9010) and with structure design as standard (see appendix for order number code)



## Siteco Louvre Luminaire XS for Continuous Mounting | with BAP65 Specular Louvre

### features

Siteco louvre luminaire XS for continuous mounting | with BAP65 specular louvre ( $L \leq 1000\text{cd/m}^2$  for beam angle  $\geq 65^\circ$  all round) | with HFG or HF dimming as standard\* | sheet steel housing, pure white (similar to RAL 9010)

protection rating: IP20  
protection class: I  
(without end caps)

### benefits

- luminaire design reduced to the essential: the light itself
- for high-grade suspended ceilings and panel ceilings (module 100)
- continuous mounting with uninterrupted louvre appearance



1. 1-lamp luminaire with BAP65 specular louvre, highly reflective
2. 2-lamp luminaire with BAP65 specular louvre, highly reflective
3. fitted end cap, module 625
4. fitted end cap, module 600
5. luminaire with sectional aluminium bladed louvre and end cap, module 600



Order No.	Lamps (W)	L1 <sup>1)</sup> x B x H (mm)	System/Panel Ceiling (ceiling module)
<i>with BAP65 specular louvre, high-gloss</i>			
5LF 41B 7-1P	1xT16 28W	1177 114 85	625 <sup>2)</sup> 600 <sup>2)</sup> 100 <sup>3)</sup>
5LF 41B 7-1J	1xT16 54W	1177 114 85	625 <sup>2)</sup> 600 <sup>2)</sup> 100 <sup>3)</sup>
5LF 41B 7-1R	1xT16 35W	1477 114 85	100 <sup>3)</sup>
5LF 41B 7-1F	1xT16 49W	1477 114 85	100 <sup>3)</sup>
5LF 41B 7-1X	1xT16 80W	1477 114 85	100 <sup>3)</sup>
5LF 41B 7-2P	2xT16 28W	1177 198 85	625 <sup>2)</sup> 600 <sup>2)</sup>
5LF 41B 7-2J	2xT16 54W	1177 198 85	625 <sup>2)</sup> 600 <sup>2)</sup>
5LF 41B 7-2R	2xT16 35W	1477 198 85	
5LF 41B 7-2F	2xT16 49W	1477 198 85	
5LF 41B 7-2X	2xT16 80W	1477 198 85	
<i>with BAP65 specular louvre, matt</i>			
5LF 414 7-1P	1xT16 28W	1177 114 85	625 <sup>2)</sup> 600 <sup>2)</sup> 100 <sup>3)</sup>
5LF 414 7-1J	1xT16 54W	1177 114 85	625 <sup>2)</sup> 600 <sup>2)</sup> 100 <sup>3)</sup>
5LF 414 7-1R	1xT16 35W	1477 114 85	100 <sup>3)</sup>
5LF 414 7-1F	1xT16 49W	1477 114 85	100 <sup>3)</sup>
5LF 414 7-1X	1xT16 80W	1477 114 85	100 <sup>3)</sup>
5LF 414 7-2P	2xT16 28W	1177 198 85	625 <sup>2)</sup> 600 <sup>2)</sup>
5LF 414 7-2J	2xT16 54W	1177 198 85	625 <sup>2)</sup> 600 <sup>2)</sup>
5LF 414 7-2R	2xT16 35W	1477 198 85	
5LF 414 7-2F	2xT16 49W	1477 198 85	
5LF 414 7-2X	2xT16 80W	1477 198 85	

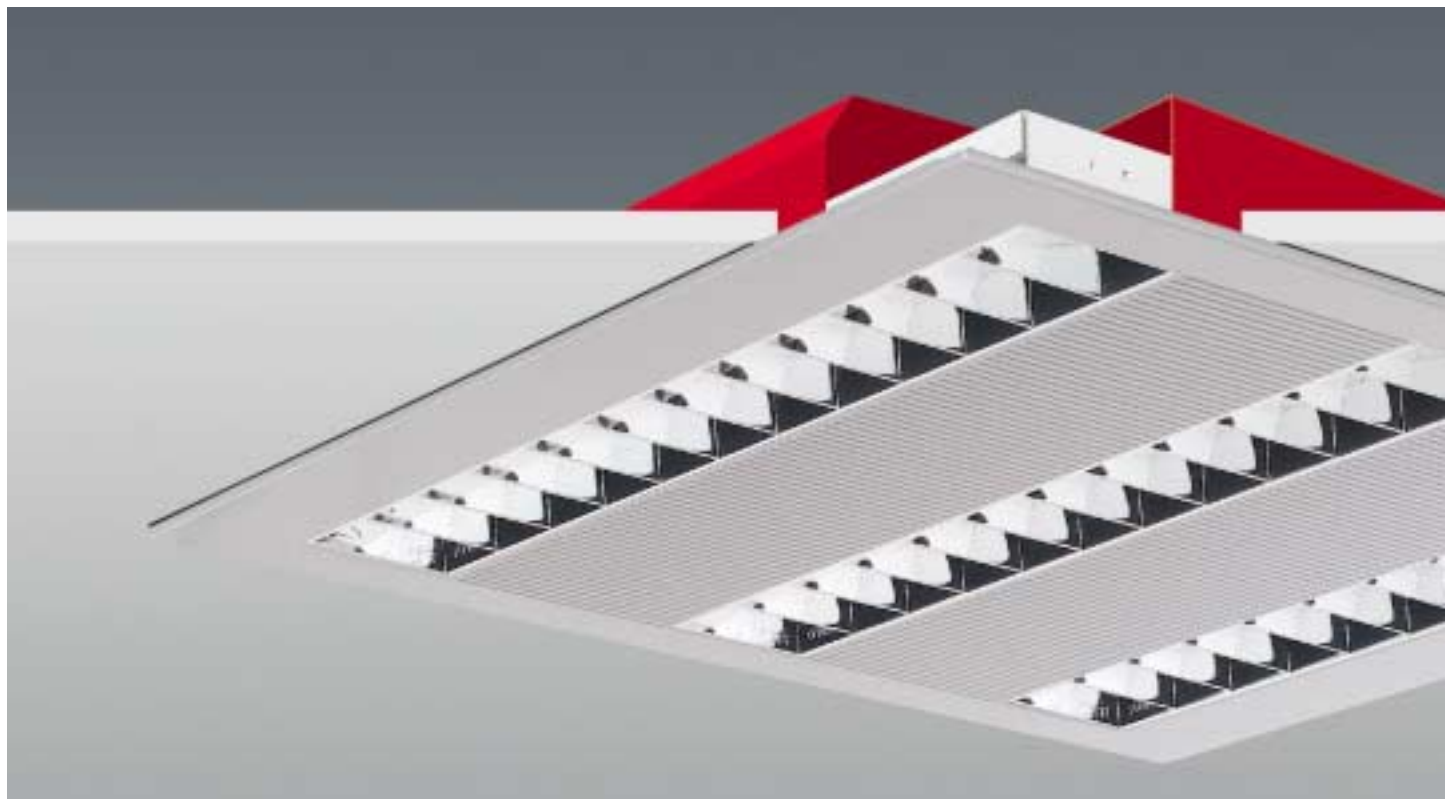
- 1) continuous luminaire without end caps, please order end cap sets separately (total length L (module 625) = L1+72mm; L (module 600) = L1+22mm)
- 2) The overall length of the luminaire is designed for system ceilings with module size 625mm (module 625) or with module size 600mm (module 600).
- 3) the width of the luminaire is designed for panel ceilings with module size 100mm (module 100).

□ dimensions: length x breadth x height = L x B x H

### reference

□ mounting accessories 3 | 14

\* The luminaires are optionally available in a dimmable version and also with the colour silver (similar to RAL 9006) as standard (see appendix for order number code)



1



1. Refurbishment with the Siteco louvre luminaire leaves the old housing in the ceiling. Only the lamps and possibly the ballast may need to be removed. The Siteco louvre luminaire completely covers the old luminaire. Painting and extensive plastering work are not required.





MIRO™

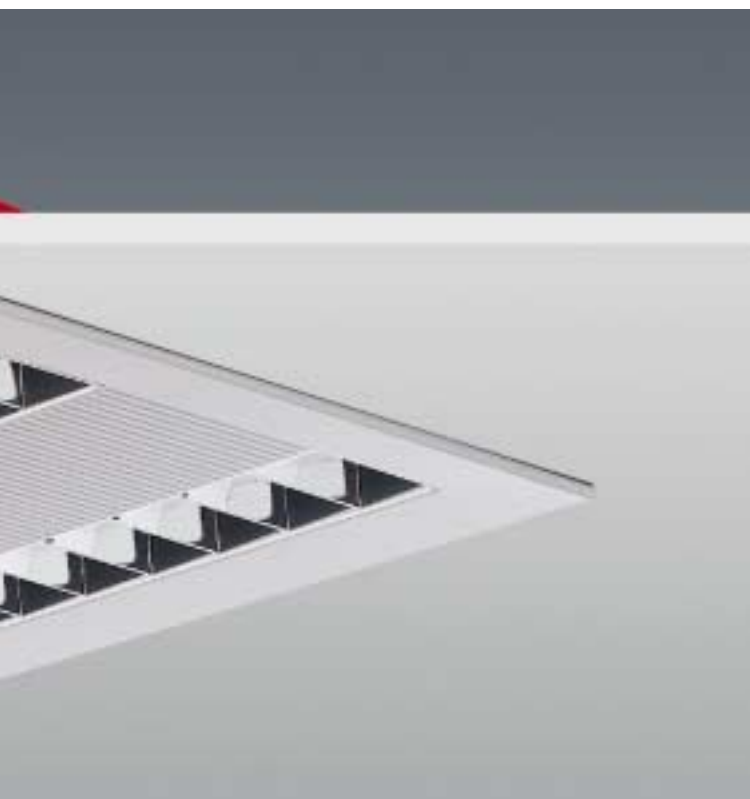
## Siteco Louvre Luminaire S Refurbishment Luminaire | with BAP65 Highly Reflective Specular Louvre

features Siteco louvre luminaire S refurbishment luminaire for installation in existing fitted luminaire | with BAP65 specular louvre | with HFG or HF dimming as standard\* | sheet steel housing, silver (similar to RAL 9006) \*

protection rating: IP20  
protection class: I

benefits

- suitable for the refurbishment of nearly all recessed luminaires
- the old luminaire stays in ceiling | the Siteco louvre luminaire frame completely covers up the housing of the old luminaire
- simple installation with standard accessories in the housing of the old luminaire
- luminaire also in silver and/or with structured design as standard



2

2. experience shows: a Siteco louvre luminaire S 1x80W (power consumption 85W) when refurbishing an old luminaire of 2x58W or 2x65W (power consumption c. 150W – 165W) results in energy savings of 43% coupled with a high lighting level and considerably improved light quality.

Order No.	Lamps (W)	L x B x H <sup>1)</sup> (mm)	System Ceiling (ceiling module)
with BAP65 specular louvre, high gloss <sup>4)</sup>			
5LF 712 7-1FA0000A	1xT16 49W	1575 338 <sup>2)</sup> 51+7	
5LF 712 7-1XA0000A	1xT16 80W	1575 338 <sup>2)</sup> 51+7	
5LF 722 7-2YA0000A	2xT16 24W	625 625 51+7	600 <sup>3)</sup>
5LF 712 7-2YA0000A	2xT16 24W	650 650 51+7	625 <sup>3)</sup>
5LF 722 7-3MA0000A	3xT16 14W	625 625 51+7	600 <sup>3)</sup>
5LF 712 7-3MA0000A	3xT16 14W	650 650 51+7	625 <sup>3)</sup>
with BAP65 specular louvre, matt <sup>4)</sup>			
5LF 714 7-1FA0000A	1xT16 49W	1575 338 <sup>2)</sup> 51+7	
5LF 714 7-1XA0000A	1xT16 80W	1575 338 <sup>2)</sup> 51+7	
5LF 724 7-2YA0000A	2xT16 24W	625 625 51+7	600 <sup>3)</sup>
5LF 714 7-2YA0000A	2xT16 24W	650 650 51+7	625 <sup>3)</sup>
5LF 724 7-3MA0000A	3xT16 14W	625 625 51+7	600 <sup>3)</sup>
5LF 714 7-3MA0000A	3xT16 14W	650 650 51+7	625 <sup>3)</sup>

- 1) housing height + ceiling-sided rim holes
- 2) the width of the luminaire is designed for panel ceilings with module size 625mm (module 625).
- 3) the overall length and width of the luminaire are designed for system ceilings with module size 625mm (module 625) or with module size 600mm (module 600).
- 4) L ≤ 200cd/m<sup>2</sup> for beam angle ≥ 65° all round
- 5) L ≤ 1000cd/m<sup>2</sup> for beam angle ≥ 65° all round

Siteco louvre luminaire S completely covers the flange of the old luminaire dimensions: length x breadth x height = L x B x H

### reference

☒ mounting accessories 3 | 14

\* The luminaires are optionally available in a dimmable version and also in a brilliant white colour (similar to RAL 9010) and with structure design as standard (see appendix for order number code)

## Mounting Accessories

		<b>Quadrature®</b>			<b>SiLUNA®</b>		<b>Sylta</b>	
<b>Luminaire</b>		Details			Details		Details	
<b>mounting bracket for</b>								
<b>system ceiling module 625</b>	<b>clamping range</b>	<b>37 - 48mm</b>	<b>59 - 70mm</b>	<b>T-Profile (H = 38mm)</b>	<b>25 - 50mm</b>		<b>3 - 27mm / 41 - 65mm</b>	
		5LM 591 0-3 <sup>1)</sup>	5LM 591 0-4 <sup>2)</sup>	5LM 591 0-1 <sup>3)4)</sup>	5LJ 951 0-2 <sup>2)</sup>	2	5MS 900 1-1 <sup>3)</sup>	3
1-lamp luminaire								
2-lamp luminaire								
3-lamp luminaire								
<b>system ceiling module 600</b>	<b>clamping range</b>	<b>37 - 48mm</b>	<b>59 - 70mm</b>	<b>T-Profile (H = 38mm)</b>	<b>25 - 50mm</b>			
		5LM 591 0-3 <sup>1)</sup>	5LM 591 0-4 <sup>2)</sup>	5LM 591 0-1 <sup>3)6)</sup>	5LJ 951 0-3 <sup>2)</sup>	2		
1-lamp luminaire								
2-lamp luminaire								
3-lamp luminaire								
<b>cut ceiling aperture</b>	<b>clamping range</b>	<b>37 - 48mm</b>	<b>59 - 70mm</b>		<b>25 - 50mm</b>		<b>3 - 27mm / 41 - 65mm</b>	
luminaire width W = 622mm		5LM 591 0-3 <sup>1)</sup>	5LM 591 0-4 <sup>2)</sup>	1	5LJ 951 0-2 <sup>2)</sup>	2	5MS 900 1-1 <sup>3)</sup>	3
luminaire width W = 597mm		5LM 591 0-3 <sup>1)</sup>	5LM 591 0-4 <sup>2)</sup>	1	5LJ 951 0-3 <sup>2)</sup>	2		
	<b>clamping range</b>	<b>34 - 45mm</b>	<b>45 - 56mm</b>					
luminaire width W = 353mm		5LM 591 0-2 <sup>1)</sup>	5LM 591 0-4 <sup>2)</sup>	1	5LM 591 0-1 <sup>2)</sup>	2		
luminaire width W = 309mm								
<b>panel ceiling module 100</b>	<b>clamping range</b>							
luminaire length L1 = 1177mm								
luminaire length L1 = 1477mm								
<b>housing end cap for</b>	<b>end cap length (LR)</b>							
<b>system ceiling module 625</b>								
1-lamp luminaire								
2-lamp luminaire								
<b>system ceiling module 600</b>								
1-lamp luminaire								
2-lamp luminaire								
<b>cut ceiling aperture</b>								
1-lamp luminaire								
2-lamp luminaire								
<b>panel ceiling module 100</b>								
1-lamp luminaire								
2-lamp luminaire								
<b>through wiring</b>								
3x 1,5mm <sup>2</sup>								
5x 1,5mm <sup>2</sup>								
3x 1,5mm <sup>2</sup>								
5x 1,5mm <sup>2</sup>								
<b>supplementary terminal</b>								
2-pole (L2, L3)					5LJ 800 0-2XK		5LJ 800 0-2XK	
<b>suction pad</b>			5LJ 484 0-0XJ <sup>9)</sup>					

- 1) set of 4 (4 pieces required for each luminaire)
- 2) set of 2 (2 pieces required for each luminaire)
- 3) set of 2 (2 pieces required for each luminaire/each continuous row)
- 4) installation aid for simplified mounting and dismantling; order no. 105 115 001
- 5) maximum flange width of grid profile for system ceilings = 25mm
- 6) mounted to the vertical plate of the system ceiling T-shaped grid profile (height of T-profile = 38mm)
- 7) mounted to the horizontal leg of the system ceiling grid profile (height of grid profile is irrelevant)
- 8) the luminaire cover can be easily removed with 2 suction pads
- 9) please clarify method of mounting of old luminaire before refurbishment

Comfit® XS		Comfit® M		Comfit® S	
Details		Details		Details	
<b>18 - 33mm</b> 5LP 900 0-0XC <sup>(1,3)</sup>	<b>31 - 50mm</b> 5LP 900 1-0XC <sup>(1,3)</sup> 4	<b>21 - 36mm</b>	<b>36 - 50mm</b> grid profile		
				5LP 901 1-0XC <sup>(1,4),7)</sup> 7	5LF 910 2-1 <sup>(2),9)</sup> 9
		5LF 900 1-4XC <sup>(1,4)</sup>	5LF 900 2-4XC <sup>(1,4)</sup>	8	5LF 910 2-2 <sup>(2),9)</sup> 9
					5LF 910 2-3 <sup>(2),9)</sup> 9
<b>18 - 33mm</b> 5LP 900 0-0XC <sup>(1,3)</sup>	<b>31 - 50mm</b> 5LP 900 1-0XC <sup>(1,3)</sup> 4	<b>21 - 36mm</b>	<b>36 - 50mm</b> grid profile		
				5LP 901 1-0XC <sup>(1,4),7)</sup> 7	5LF 910 1-1 <sup>(2),9)</sup> 9
		5LF 900 1-4XC <sup>(1,4)</sup>	5LF 900 2-4XC <sup>(1,4)</sup>	8	5LF 910 1-2 <sup>(2),9)</sup> 9
					5LF 910 1-3 <sup>(2),9)</sup> 9
<b>18 - 33mm</b> 5LP 900 0-0XC <sup>(1,3)</sup>	<b>31 - 50mm</b> 5LP 900 1-0XC <sup>(1,3)</sup> 4				
<b>25 - 35mm</b> 5LF 901 1 <sup>(2)</sup> 5 5LF 901 2 <sup>(2)</sup> 5					
<b>LR=11mm</b>	<b>LR=36mm</b>				
	5LF 900 1-2 <sup>(3)</sup> 6 5LF 900 2-2 <sup>(3)</sup> 6				
5LF 900 1-1 <sup>(3)</sup> 6 5LF 900 2-1 <sup>(3)</sup> 6					
5LF 900 1-1 <sup>(3)</sup> 6 5LF 900 2-1 <sup>(3)</sup> 6	5LF 900 1-2 <sup>(3)</sup> 6 5LF 900 2-2 <sup>(3)</sup> 6				
5LF 900 1-1 <sup>(3)</sup> 6 5LF 900 2-1 <sup>(3)</sup> 6	5LF 900 1-2 <sup>(3)</sup> 6 5LF 900 2-2 <sup>(3)</sup> 6				
<b>for 28W, 54W</b> 5LY 911 5 5LY 911 7					
<b>for 35W, 80W</b> 5LY 911 6 5LY 911 8					
			5LJ 800 0-2XK		5LJ 800 0-2XK

for detailed description  
see following page

## reference

[detailed description](#) 3|16

## Mounting Accessories

### Quadrature®



**mounting brackets**  
for grid profiles or mounting surfaces parallel to long side of the luminaire | (set of 4)

### SiLUNA®



**mounting accessories**  
for grid profiles parallel to long side of the luminaire | mounting brackets are fitted at luminaire end and protrude laterally | (set of 4)

**suction pad**  
rubber suction pad for easy opening of luminaire cover when relamping | (2 suction pads required)

### Sylta



**mounting brackets**  
for grid profiles or mounting surfaces parallel to long side of the luminaire | (set of 4)

### Siteco Louvre Luminaire XS



**quick-fit mounting brackets**  
for grid profiles or mounting surfaces parallel to long side of the luminaire | (set of 4)

### Siteco Louvre Luminaire M



**quick-fit mounting brackets**  
with additional auxiliary supporting section | for grid profiles parallel to long side of the luminaire | suitable for Siteco Louvre Luminaires M, 2-lamp, W = 597mm and W = 622mm | (mounted to horizontal leg of system ceiling grid profile) | (set of 4)



**mounting accessories**  
for installation of Siteco louvre luminaire XS in panel ceilings | mounting parallel to long side of luminaire | (set of 2)



**quick-fit mounting brackets**  
for grid profiles or mounting surfaces parallel to long side of the luminaire | suitable for Siteco louvre luminaires M, 3-lamp, W = 597mm and W = 622mm | (set of 4)



**end cap**  
snaps onto continuous luminaires | end caps of different lengths (LR) for adapting the luminaire housing (L1 = 1177mm) to the module size of the system ceiling:  
end cap LR = 11mm for system ceiling module 600,  
end cap LR = 36mm for system ceiling module 625

### Siteco Louvre Luminaire M



**mounting accessories**  
for installation of Siteco louvre luminaire S within existing canopies | universal bracket for mounting within most types of installed fittings (providing the existing luminaire is securely fixed) | (set of 2)  
please clarify method of mounting of old luminaire before refurbishment

**through-wiring set**  
for through wiring in a continuous row | (for 5-pole through-wiring please order 2-pole supplementary terminals (L2, L3) separately)

### general

**supplementary terminal**  
for luminaire installation | 2-pole (L2, L3), max. 2,5mm<sup>2</sup> | (not required with Siteco louvre luminaire XS)

